

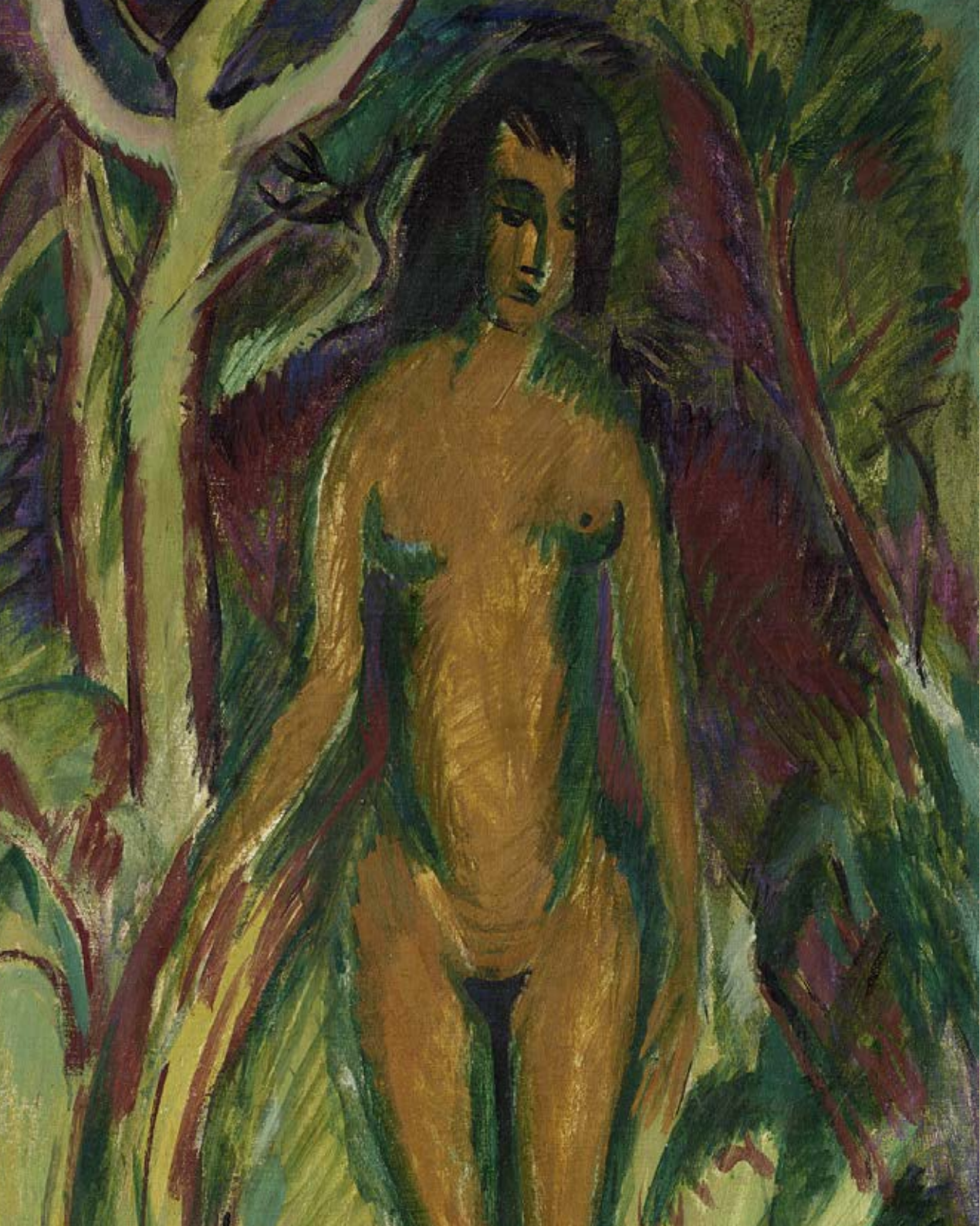
CHRISTIE'S



# Impressionist and Modern Art Works on Paper and Day Sales

NEW YORK | 18 MAY 2024







# Impressionist and Modern Art Works on Paper and Day Sales

## AUCTION

Saturday 18 May 2024  
Session I: Works on Paper Sale at 10.00am (Lots 501-602)  
Session II: Day Sale at 2.00pm (Lots 701-855)

20 Rockefeller Plaza  
New York, NY 10020

## VIEWING

Saturday 4 May–Saturday 18 May  
Monday–Saturday 10.00am–5.00pm  
Sunday 1.00pm–5.00pm

For further information regarding view dates and times,  
please visit [christies.com](https://christies.com) or contact:  
[info@christies.com](mailto:info@christies.com)  
+1 212 636 2000

---

## AUCTION CODE AND NUMBER

To place bids please contact the Bid department +1 212 636 2437  
Please note this sale should be referred to as  
Lots 501-602: **22612-CYRUS**  
Lots 701-855: **22615-RENZO**

## ABSENTEE AND TELEPHONE BIDS

Tel: +1 212 636 2000



Scan to view full auction online

**CHRISTIE'S**



## CONTACTS

### HEAD OF SALE

Margaux Morel  
mmorel@christies.com  
+1 212 636 2656

### ASSOCIATE SPECIALIST

Emmanuelle Loulmet  
eloulmet@christies.com  
+1 212 636 2226

### CATALOGUERS

Lou Clinton-Celini  
lclinton-celini@christies.com  
+1 212 636 2447

Olya Voronetskaya  
ovoronetskaya@christies.com  
+1 212 636 2050

### SALE COORDINATOR

Sophia Baggett  
sbaggett@christies.com  
+1 212 951 2166

---

### FURTHER INFORMATION

The sale of each lot is subject to the Conditions of Sale, Important Notices and Explanation of Cataloguing Practice which are set out online, with other important sale information at [christies.com](https://www.christies.com). Please see Conditions of Sale at [christies.com](https://www.christies.com) for full descriptions of symbols used in this publication.



Pisano



# Impressionist and Modern Art Works on Paper Sale

Saturday 18 May 2024  
10.00am (Lots 501-602)



Scan to view  
full auction online



PROPERTY FROM A MEMBER OF THE MATISSE FAMILY

501

**JOAN MIRO (1893-1983)**

*Sans titre*

signed 'Miró' (lower center); dated '1953' (on the reverse)  
brush and India and colored inks on paper napkin  
11¼ x 15¾ in. (28.6 x 40.5 cm.)  
Painted in 1953

\$7,000-10,000



502

**SALVADOR DALI (1904-1989)**

*Evocation d'un crâne, rocher, jeune fille au cerceau et trois personnages*

signed, dated and dedicated '1933 A Emilio Tierri, tres amicallement  
Salvador Dalí' (lower right)  
pen and black ink on paper  
11¼ x 8¾ in. (28.6 x 21.3 cm.)  
Drawn in 1933

\$8,000-12,000



THE COLLECTION OF LOIS AND PHILIP MACHT

503

**JEAN (HANS) ARP (1886-1966)**

*Stern*

signed 'Arp' (on the reverse)  
watercolor and charcoal on paper  
14½ x 10¾ in. (37 x 27 cm.)

\$10,000-15,000



504

**MARC CHAGALL (1887-1985)**

*Esquisse pour Le coq bleu*

gouache, pastel, brush and India ink and charcoal on blue paper  
10¼ x 8¼ in. (25.6 x 20.9 cm.)  
Executed circa 1958-1960

\$30,000-50,000



PROPERTY FROM THE COLLECTION OF SHIRLEY ROSS DAVIS

505

**RENE MAGRITTE (1898-1967)**

*Sans titre*

signed 'Magritte' (lower right)  
pencil on paper  
16½ x 11¾ in. (41.8 x 29.6 cm.)

\$300,000-500,000



PROPERTY FROM THE COLLECTION OF SHIRLEY ROSS DAVIS

506

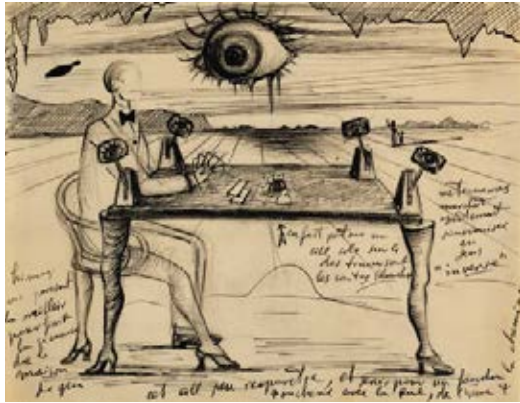
**PAUL DELVAUX (1897-1994)**

*Le Rêve*

signed and inscribed 'P. DELVAUX 1975' (lower right)  
watercolor, pen and grey and India inks and ink wash on paper  
40¼ x 27½ in. (102.1 x 70 cm.)  
Executed in 1960

\$100,000-150,000





507  
**SALVADOR DALÍ (1904-1989)**  
*Dessin pour Spellbound*  
 inscribed (lower half)  
 brush and pen and India and black inks over pencil on paper  
 6 7/8 x 7 7/8 in. (15.5 x 20.1 cm.)  
 Executed in 1945  
 \$50,000-70,000



PROPERTY FROM A MEMBER OF THE MATISSE FAMILY  
 508  
**JOAN MIRO (1893-1983)**  
*Sans titre*  
 signed 'Miro' (lower right); dated twice and numbered  
 '29/VIII/69, 24/III/67 I' (on the reverse)  
 gouache and brush and India ink on paper  
 17 3/4 x 21 3/4 in. (45 x 57.7 cm.)  
 Painted between 24 March 1967 and 29 August 1969  
 \$80,000-120,000



509  
**SALVADOR DALÍ (1904-1989)**  
*Brazo-Rio*  
 brush and India ink on paper  
 6 x 8 1/8 in. (15.2 x 20.7 cm.)  
 Painted in 1946  
 \$7,000-10,000



510  
**SALVADOR DALÍ (1904-1989)**  
*Georges Washington, projet de carte des "Tarots de Salvador Dalí"*  
 signed 'Dalí' (lower right)  
 gouache and paper collage on paper  
 Sheet size: 19 1/2 x 12 3/4 in. (49.7 x 32.4 cm.)  
 Executed circa 1971  
 \$30,000-50,000



511  
**RENE MAGRITTE (1898-1967)**  
*Dessin pour la couverture de London Gallery Bulletin, no. 1*  
 signed 'Magritte' (center right) and inscribed '(Le cliché peut agrandir le dessin s'il y a lieu)' (lower right)  
 pen and India ink on paper  
 10 x 6 1/8 in. (25.4 x 15.4 cm.)  
 Drawn in April 1938  
 \$50,000-80,000

PROPERTY FROM THE ESTATE OF SYLVIA PAINE CONSTABLE

512  
**SALVADOR DALÍ (1904-1989)**  
*Rhinocéros (recto); Etude pour Rhinocéros (verso)*  
 signed and dated twice 'Dalí 1959' (lower right; recto) and inscribed (lower left; recto); signed again and inscribed 'SIEKYRA-DALÍ PRESENTEN RHINOCEROS' (verso)  
 gouache, brush and black and India inks and ink wash over pencil on card (recto); pencil on card (verso)  
 35 3/4 x 25 5/8 in. (90.7 x 65 cm.)  
 Executed in 1959  
 \$400,000-600,000





513

**LEONARD-TSUGUHARU FOUJITA**  
(1886-1968)

*Portrait de jeune femme*

signed, signed again in Japanese, dated and inscribed 'Foujita 1939 Paris' (upper right)  
watercolor, pen and black ink and charcoal on paper laid down on board  
10¾ x 8¾ in. (27.2 x 22.4 cm.)  
Executed in Paris in 1939

\$20,000-30,000

PROPERTY FROM A PARK AVENUE COLLECTION

516

**SALVADOR DALI (1904-1989)**

*Illustration pour La Saint Bible*

signed and dated 'Dali 1964' (lower center)  
watercolor and pen and black ink on card  
19¾ x 13¼ in. (49.6 x 33.7 cm.)  
Executed in 1964

\$60,000-80,000



PROPERTY FROM A PRIVATE AMERICAN COLLECTION

514

**PABLO PICASSO (1881-1973)**

*Trois danseurs*

signed and dated 'Picasso 25' (upper right)  
pen and India ink on blue paper  
13¾ x 10 in. (35.4 x 25.4 cm.)  
Drawn in Monte Carlo in 1925

\$100,000-150,000

PROPERTY FROM A PARK AVENUE COLLECTION

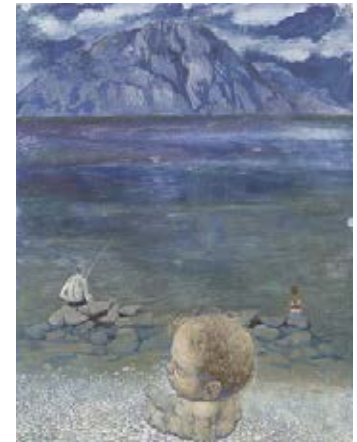
517

**PAVEL TCHELITCHEW (1898-1957)**

*Descente du soir*

signed and dated 'P. Tchelitchev 35' (lower left)  
gouache and watercolor on paper laid down on card  
Sheet size: 25¾ x 19¾ in. (65 x 50.3 cm.)  
Executed in 1935

\$30,000-50,000



PROPERTY FROM A PRIVATE COLLECTION, USA

515

**PABLO PICASSO (1881-1973)**

*Femme, fleurs et oiseaux (recto); Trois têtes d'hommes (verso)*

signed, dated and numbered '5.6.67. I Picasso' (upper left; *recto*);  
signed, dated and numbered again 'Picasso 5.6.67. IV' (upper right; *verso*)  
brush and pen and black and India inks and ink wash on paper  
(*recto* and *verso*)  
19½ x 23¾ in. (49.5 x 60.3 cm.)  
Executed on 5 June 1967

\$400,000-600,000

PROPERTY FROM A MEMBER OF THE MATISSE FAMILY

518

**KAY SAGE (1898-1963)**

*The Currents of Space*

signed and dated 'Kay Sage '58' (lower right); titled 'The Currents of Space' (on the reverse)  
paper collage, watercolor, brush and black ink and charcoal on paper  
17¼ x 22¾ in. (44 x 56.2 cm.)  
Executed in 1958

\$50,000-70,000





PROPERTY FROM A PARK AVENUE COLLECTION

519

**PAVEL TCHELITCHEW (1898-1957)**

*Nature morte aux pommes et poires*

signed and dated 'P. Tchelitchew 27' (lower right)  
gouache and watercolor on paper laid down on canvas  
19 x 19 1/8 in. (48 x 49.8 cm.)  
Painted in 1927

\$12,000-18,000



PROPERTY OF AN AMERICAN ESTATE

520

**MARC CHAGALL (1887-1985)**

*Les Glaïeuls*

signed 'Marc Chagall' (lower left)  
gouache, watercolor, pastel and colored wax crayons on paper  
25 1/2 x 20 in. (65 x 50.7 cm.)  
Executed in 1950

\$250,000-350,000



521

**MARC CHAGALL (1887-1985)**

*Les Amoureux*

signed 'Marc Chagall' (lower right)  
gouache, watercolor and colored wax crayons over pencil on paper  
16 1/8 x 12 3/4 in. (40.8 x 32.3 cm.)  
Painted in 1928

\$100,000-150,000

A FASHIONABLE LIFE: THE COLLECTION OF AN ELEGANT LADY

522

**HENRI MATISSE (1869-1954)**

*Odalisque*

signed and dated 'Henri Matisse 5/44' (lower right); signed again,  
dedicated and inscribed 'a monsieur Laurent Henri Matisse Dec 1946'  
(on the reverse)  
charcoal and estompe on paper  
15 7/8 x 20 3/4 in. (40.2 x 52.5 cm.)  
Executed in Nice in May 1944

\$500,000-800,000



PROPERTY FROM THE COLLECTION OF SAM AND ESTHER SARICK

523

**PABLO PICASSO (1881-1973)**

*Homme et trois femmes nues (recto);  
Femme et deux hommes (verso)*

signed and dated 'Picasso 3.6.67' (lower left; recto); signed and dated  
again and numbered '6.6.67. IV Picasso' (lower right; verso)  
brush and pen and black and India inks and ink wash on paper  
(recto and verso)  
19 3/8 x 23 3/4 in. (49.2 x 60.4 cm.)  
Executed on 3 and 6 June 1967

\$300,000-500,000



524

**SONIA DELAUNAY (1885-1979)**

*Etude de costume de bain*

signed 'Sonia Delaunay' (lower right) and dated '1928' (lower center)  
gouache and watercolor over pencil on paper  
10 3/4 x 8 in. (27.2 x 20.4 cm.)  
Painted in 1928

\$5,000-7,000





PROPERTY FROM A PRIVATE COLLECTION

525

**GEORGES VALMIER (1885-1937)**

*Jeune fille assise*

signed and dated 'G. VALMIER 1924' (lower right)  
gouache on paper  
11 $\frac{1}{8}$  x 7 $\frac{1}{8}$  in. (29.5 x 19.4 cm.)  
Painted in 1924

\$10,000-15,000



PROPERTY FROM A PRIVATE COLLECTION

526

**HENRI LAURENS (1885-1954)**

*Nu*

signed with monogram (lower right)  
gouache and *sgaffito* on board  
11 $\frac{1}{8}$  x 8 $\frac{1}{8}$  in. (31.5 x 22.5 cm.)  
Executed in 1926

\$12,000-18,000



527

**CONSTANTIN BRANCUSI (1867-1957)**

*Sans titre (Femme nue assise)*

signed 'C. Brancusi' (lower left)  
tempera and gouache on board  
25 $\frac{1}{8}$  x 19 $\frac{1}{8}$  in. (65 x 49.7 cm.)  
Painted *circa* 1928

\$300,000-500,000

PROPERTY FROM THE COLLECTION OF SHIRLEY ROSS DAVIS

528

**HENRI MATISSE (1869-1954)**

*Patitcha*

signed and dated 'H Matisse avril 1947' (lower left)  
charcoal, brown Conté crayon and *estompe* on paper  
20 $\frac{1}{4}$  x 16 in. (52.7 x 40.6 cm.)  
Executed in Nice in April 1947

\$200,000-300,000



529

**GUSTAV KLIMT (1862-1918)**

*Mit verschränkten Händen sitzender Halbakt*

with Nachlass stamp (Lugt 1575; lower right)  
pencil on paper  
22 $\frac{3}{8}$  x 14 $\frac{3}{4}$  in. (56.9 x 37.4 cm.)  
Drawn in 1914-1915

\$60,000-80,000



PROPERTY FROM THE COLLECTION OF DOROTHY TAPPER GOLDMAN

530

**OSKAR KOKOSCHKA (1886-1980)**

*Sitzender Weiblicher Akt Nach Links*

signed with initials 'OK' (lower right)  
gouache, watercolor, colored wax crayons and black  
Conté crayon on paper  
17 $\frac{1}{8}$  x 12 $\frac{1}{8}$  in. (44.6 x 31.4 cm.)  
Executed in 1913

\$40,000-60,000





A FASHIONABLE LIFE: THE COLLECTION OF AN ELEGANT LADY

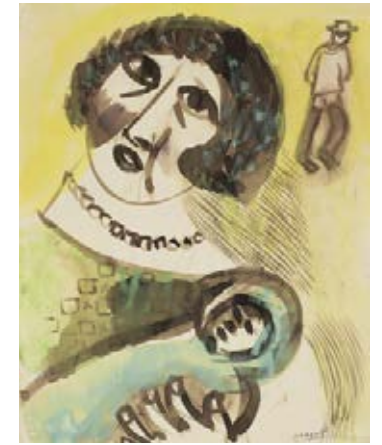
531

**HENRI MATISSE (1869-1954)**

*Tête de femme avec voile*

signed and dated 'Henri Matisse 42' (lower right)  
black Conté crayon on paper  
16 x 20¾ in. (40.5 x 52.6 cm.)  
Drawn in 1942

\$50,000-70,000



PROPERTY FROM AN IMPORTANT PRIVATE COLLECTION

534

**MARC CHAGALL (1887-1985)**

*Femme et enfant*

signed 'Chagall' (lower right)  
watercolor and brush and brown ink on paper  
10¾ x 8¾ in. (26.4 x 21.1 cm.)  
Painted in 1922-1923

\$100,000-150,000



PROPERTY FROM THE COLLECTION OF SAM AND ESTHER SARICK

532

**PABLO PICASSO (1881-1973)**

*Tête de femme*

dated '31 Mars 43' (lower right)  
pen and black ink on paper  
25¾ x 19¾ in. (65.4 x 50.2 cm.)  
Drawn on 31 March 1943

\$250,000-350,000



535

**PAUL GAUGUIN (1848-1903)**

*La danse du feu ou Le diable parle*

signed 'Paul Gauguin' (lower left)  
pencil on paper  
6¾ x 8¾ in. (16.2 x 22.5 cm.)  
Drawn circa 1891-1893

\$30,000-50,000



533

**PABLO PICASSO (1881-1973)**

*La Suite Vollard*

the rare complete set of one hundred etchings, aquatints and drypoints,  
of which fifty signed 'Picasso' (lower right)  
on Montval laid paper, watermarked *Picasso* or *Vollard*  
Each Sheet *circa*: 13¾ x 17½ in. (34 x 44.5 cm.)  
Executed between 1930 and 1937, this set is from the edition of 260  
published by Ambroise Vollard, Paris, 1939.

\$800,000-1,200,000

PROPERTY FROM A PARK AVENUE COLLECTION

536

**PAUL GAUGUIN (1848-1903)**

*Etude pour La nativité tahitienne*

pastel and charcoal on paper laid down on paper  
Image size: 10½ x 8½ in. (25.8 x 20.5 cm.) (irregular)  
Sheet size: 14 x 12 in. (35.5 x 30.4 cm.)  
Drawn *circa* 1901

\$40,000-60,000





PROPERTY FROM THE COLLECTION OF DR. CORINNE BRONFMAN

537

**ODILON REDON (1840-1916)**

*Buste d'enfant*

signed 'ODILON REDON' (center right)  
pastel over pencil on paper  
17½ x 12¼ in. (44.3 x 31 cm.)

\$40,000-60,000



PROPERTY FROM A PARK AVENUE COLLECTION

538

**CHARLES ANGRAND (1854-1926)**

*Etude d'enfant dormant*

stamped with initials 'CH.A.' (lower right)  
black Conté crayon on paper  
24½ x 18¾ in. (62.2 x 47.8 cm.)  
Drawn *circa* 1896

\$25,000-35,000



PROPERTY FROM A PARK AVENUE COLLECTION

539

**ODILON REDON (1840-1916)**

*Profil de femme*

signed 'ODILON REDON' (lower left)  
charcoal and black Conté crayon on paper  
20½ x 14¾ in. (52 x 37.5 cm.)

\$50,000-70,000

540

**ANDRE DERAIN (1880-1954)**

*Les Naiades*

signed 'a. Derain' (lower right)  
gouache and watercolor on paper  
18¾ x 24¾ in. (47.6 x 61.9 cm.)  
Painted in 1905

\$50,000-70,000



541

**ANDRE DERAIN (1880-1954)**

*Paysage près de Collioure*

signed 'a. Derain' (lower right)  
brush and pen and black ink on paper  
19½ x 25¾ in. (49.5 x 64.5 cm.)  
Executed *circa* 1905

\$8,000-12,000



PROPERTY FROM AN IMPORTANT PRIVATE COLLECTION

542

**MARC CHAGALL (1887-1985)**

*La cour d'une ferme à Chambon-sur-Lac*

signed 'Marc Chagall' (lower right)  
gouache, watercolor and pencil on toned paper  
24¾ x 18¾ in. (63 x 48 cm.)  
Executed in 1926

\$200,000-300,000





PROPERTY FROM A PARK AVENUE COLLECTION

543

**KEES VAN DONGEN (1877-1968)**

*Le Peuplier*

signed 'van Dongen.' (lower right) and indistinctly inscribed (lower left)  
pastel on paper laid down on card  
19½ x 12¾ in. (49.5 x 31.5 cm.)  
Drawn by 1906

\$15,000-20,000



544

**JOHN HENRY TWACHTMAN (1853-1902)**

*Iris*

signed 'J.H. Twachtman-' (lower left)  
watercolor and pastel on paper  
17¼ x 13½ in. (43.8 x 34.3 cm.)  
Executed circa 1890s

\$7,000-10,000



PROPERTY FROM A DISTINGUISHED PRIVATE COLLECTOR

545

**MARC CHAGALL (1887-1985)**

*Les Amoureux sous les palmiers à Antibes*

stamped with signature 'Marc Chagall' (lower left)  
gouache, watercolor, pastel and pen and colored inks over pencil on paper  
30½ x 22½ in. (76.5 x 57 cm.)  
Executed in 1969

\$500,000-700,000

PROPERTY OF A GENTLEMAN

546

**RAOUL DUFY (1877-1953)**

*La Pelouse*

signed 'Raoul Dufy' (lower left)  
gouache and watercolor on paper  
19¾ x 25¾ in. (50.2 x 65.4 cm.)

\$70,000-100,000



547

**MAURICE UTRILLO (1883-1955)**

*Maison natale de Jeanne d'Arc et l'église de Domrémy*

signed and dated 'Maurice, Utrillo, V, Mai 1933,' (lower right) and titled  
'-Maison Natale de "Jeanne d'Arc et Église de Domrémy-' (lower left)  
gouache and watercolor on paper laid down on card  
14½ x 20 in. (36.9 x 50.7 cm.)  
Painted in May 1933

\$25,000-35,000



Property from the Collection of  
Fritz and Lucy Jewett

548

**JEAN DUFY (1888-1964)**

*Parade mexicaine*

signed 'Jean Dufy' (lower right)  
gouache and watercolor on paper laid down on canvas  
11 x 14½ in. (28 x 36 cm.)  
Painted circa 1960

\$15,000-20,000



Property from  
the Collection of  
**MARY & JOHN  
PAPPAJOHN**



PROPERTY FROM THE ORANGE BLOSSOM COLLECTION

549

**JEAN DUFY (1888-1964)**

*Port méditerranéen*

signed 'Jean Dufy' (lower right)  
watercolor on paper  
19 $\frac{7}{8}$  x 23 $\frac{3}{4}$  in. (49.8 x 60.3 cm.)  
Painted *circa* 1926

\$15,000-20,000



PROPERTY FROM THE ORANGE BLOSSOM COLLECTION

550

**ARMAND GUILLAUMIN (1841-1927)**

*Bord de mer*

signed and dated 'Guillaumin 1909' (lower right)  
pastel on paper  
18 $\frac{7}{8}$  x 24 $\frac{1}{2}$  in. (48 x 61.9 cm.)  
Drawn in 1909

\$7,000-10,000



551

**JEAN-LOUIS FORAIN (1852-1931)**

*Scène de bal*

signed and dated 'j.l. forain x. 87' (lower right)  
gouache and black Conté crayon on card  
22 $\frac{3}{8}$  x 16 $\frac{1}{2}$  in. (56.9 x 42.3 cm.)  
Executed in 1887

\$30,000-50,000



PROPERTY FROM A PRIVATE COLLECTION, LOS ANGELES

552

**EDGAR DEGAS (1834-1917)**

*Torse de femme nue*

stamped with signature 'Degas' (Lugt 658; lower right)  
charcoal on paper  
12 $\frac{1}{2}$  x 9 $\frac{1}{2}$  in. (32 x 24 cm.)

\$40,000-60,000

PROPERTY FROM AN IMPORTANT NEW YORK COLLECTION

553

**HENRI DE TOULOUSE-LAUTREC (1864-1901)**

*Cheval (recto); Cheval et sabots (verso)*

pencil on paper (*recto* and *verso*)  
10 $\frac{1}{8}$  x 6 $\frac{1}{4}$  in. (25.8 x 15.8 cm.)  
Drawn *circa* 1879-1881

\$12,000-18,000



PROPERTY FROM THE ESTATES OF BERNARD AND HELGA KRAMARSKY

554

**HONORE DAUMIER (1808-1879)**

*Scène de tribunal (Le Plaidoyer)*

signed 'h. Daumier' (lower left)  
gouache, watercolor, ink wash and black Conté crayon on paper  
7 x 9 $\frac{1}{4}$  in. (17.8 x 23.5 cm.)

\$100,000-150,000







A FASHIONABLE LIFE: THE COLLECTION OF AN ELEGANT LADY  
555

**HENRI MATISSE (1869-1954)**

*Portrait de la Princesse Galitzine*

signed and dated 'Henri Matisse 23/10/38' (lower right)  
charcoal, brown Conté crayon and estompe on paper  
26 x 20 in. (66 x 50.7 cm.)  
Executed on 23 October 1938

\$200,000-300,000

PROPERTY FROM THE COLLECTION OF DOROTHY TAPPER GOLDMAN  
558

**OTTO DIX (1891-1969)**

*Soldat im Bunker*

signed 'Dix' (upper left) and dated '1916' (lower right)  
pencil on paper  
11¼ x 11¼ in. (28.5 x 28.5 cm.)  
Drawn in 1916

\$15,000-20,000



PROPERTY FROM AN IMPORTANT PRIVATE COLLECTION  
556

**MARC CHAGALL (1887-1985)**

*Roi David devant Jerusalem*

signed 'Marc Chagall' (lower right) and dated '1979' (lower left)  
brush and India ink, ink wash, pastel and charcoal on paper  
39½ x 59 in. (100.1 x 149.8 cm.)  
Executed in 1979

\$180,000-250,000

PROPERTY FROM THE ORANGE BLOSSOM COLLECTION  
559

**LEO GESTEL (1881-1941)**

*Naar Holland*

signed, dated and titled 'LEO GESTEL NAAR HOLLAND-1914'  
(lower right)  
pastel and charcoal on paper  
25¼ x 19½ in. (64.2 x 50.1 cm.)  
Drawn in 1914

\$7,000-10,000



PROPERTY FROM THE ORANGE BLOSSOM COLLECTION  
557

**ANDRÉ MASSON (1896-1987)**

*Actéon*

signed 'André Masson' (lower right)  
gouache and ink wash on paper  
18¾ x 16¼ in. (47.9 x 41.3 cm.)  
Painted in 1936

\$8,000-12,000

560

**GEORGE GROSZ (1893-1959)**

*Let Me Feel Your Pulse*

signed and titled 'Grosz Let me feel your pulse' (lower left)  
and titled again 'Let me feel your Pulse' (lower right)  
watercolor, pen and red ink and brush and India ink on paper  
26¼ x 18¾ in. (66.6 x 48 cm.)  
Executed in 1934

\$25,000-35,000





561

**PAUL KLEE (1879-1940)**

*Spreng=Holz*

signed 'Klee' (upper left); dated, numbered and titled '1938 X 5 Spreng=Holz' (on the artist's mount)  
pastel on paper laid down on card  
Sheet size: 11¼ x 8¼ in. (29.8 x 20.9 cm.)  
Mount size: 17¼ x 13½ in. (43.7 x 34.2 cm.)  
Drawn in 1938

\$80,000-120,000

PROPERTY FROM A PARK AVENUE COLLECTION

564

**PAUL KLEE (1879-1940)**

*Stadt der Kirchen*

signed 'Klee' (upper left); dated, titled and numbered '1918.99 Stadt der Kirchen' (on the artist's mount)  
watercolor and pen and India ink over pencil on paper laid down on card  
Sheet size: 8½ x 6½ in. (15.5 x 20.7 cm.)  
Mount size: 12¼ x 8¾ in. (31.2 x 22.5 cm.)  
Executed in 1918

\$200,000-300,000



PROPERTY FROM THE COLIN FAMILY COLLECTION

562

**LYONEL FEININGER (1871-1956)**

*Sunset with Blue Area*

signed and dated 'Feininger 1953' (lower left)  
watercolor and pen and black ink on paper  
12½ x 19½ in. (31.8 x 48.5 cm.)  
Executed in 1953

\$10,000-15,000

PROPERTY FROM A PRESTIGIOUS PRIVATE COLLECTION

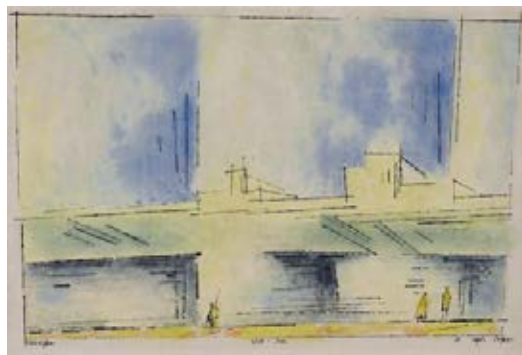
565

**WASSILY KANDINSKY (1866-1944)**

*Ohne Titel*

signed with monogram and dated '41' (lower left);  
dated again and inscribed 'No 727 1941' (on the reverse)  
gouache and pen and India ink on grey paper laid down on card  
Image size: 18¼ x 12 in. (46.5 x 30.5 cm.)  
Executed in 1941

\$250,000-350,000



PROPERTY FROM THE COLIN FAMILY COLLECTION

563

**LYONEL FEININGER (1871-1956)**

*Ostsee*

signed, dated and titled 'Feininger Ost=See 15 Sept. 1925' (along the lower edge)  
watercolor and pen and black ink on paper  
13½ x 18¾ in. (34.4 x 47.7 cm.)  
Executed on 15 September 1925

\$15,000-20,000

PROPERTY FROM THE COLLECTION OF AINO AND ALVAR AALTO FAMILY

566

**FERNAND LEGER (1881-1955)**

*Sans titre*

signed with initials, signed again, dedicated and inscribed 'F.L. a Johanna Aalto Cordialement F Leger un souvenir de sa visite a mon atelier' (lower right)  
gouache, watercolor and pen and black ink on paper  
Image size: 9¾ x 13 in. (23.9 x 33 cm.)  
Sheet size: 15 x 18½ in. (38.2 x 47 cm.)

\$40,000-60,000





PROPERTY FROM A PRIVATE FLORIDA COLLECTION

567

**ALBERT GLEIZES (1881-1953)**

*Composition cubiste ou Portrait du Commandant Lambert*

signed and dated 'Alb Gleizes 14.' (lower right); signed again and dedicated 'A Madame Jeanne Lambert en reconnaissance et en souvenir des bonnes soirées de 1915 où Florent Schmitt, Valmier, Salzedo et moi purent revivre et vivre des heures si précieuses Albert Gleizes. 8 Janvier 1915' (on the artist's mount)

gouache and watercolor on paper laid down on paper

Image size: 7½ x 6⅞ in. (19 x 17.4 cm.)

Mount size: 12⅞ x 8⅞ in. (30.7 x 21.3 cm.)

Painted in 1914

\$8,000-12,000



PROPERTY FROM A PRIVATE COLLECTION

568

**JUAN GRIS (1887-1927)**

*Nature morte à la cruche et entonnoir*

charcoal on paper

11 x 17⅞ in. (28 x 45.8 cm.)

Drawn in 1911

\$10,000-15,000



PROPERTY FROM A PRIVATE FLORIDA COLLECTION

569

**ALBERT GLEIZES (1881-1953)**

*Composition aux trois personnages*

pastel, charcoal and white chalk on joined paper laid down on canvas

45½ x 35 in. (115.5 x 89 cm.)

Executed circa 1920

\$20,000-30,000



570

**ROBERT DELAUNAY (1885-1941)**

*La tour aux rideaux*

pencil on paper

8¼ x 7⅞ in. (21 x 18.2 cm.)

Drawn in 1915-1916

\$30,000-50,000



PROPERTY FROM A PRESTIGIOUS PRIVATE COLLECTION

571

**PABLO PICASSO (1881-1973)**

*Femme allongée (Dora Maar)*

signed and dated 'Picasso 26.12.38.' (lower right)

pen and black ink and wash on paper

10¾ x 13⅞ in. (27.2 x 35.2 cm.)

Executed on 26 December 1938

\$550,000-750,000



PROPERTY FROM A PRIVATE COLLECTION

572

**JEAN METZINGER (1883-1956)**

*Etude pour Danseuse dans un café*

signed 'Metzinger' (lower left)

pencil with white heightening on paper laid down on paper

(squared for transfer)

23 x 18⅞ in. (58.2 x 46.6 cm.)

Drawn circa 1912

\$12,000-18,000



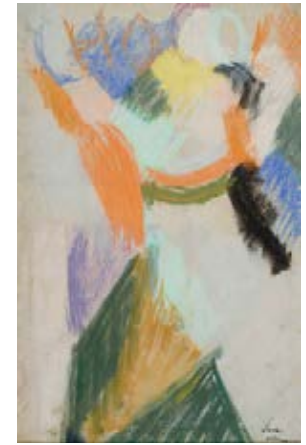
573  
**FERNAND LEGER (1881-1955)**  
*L'Echafaudage*  
 signed and dated 'F LEGER 19' (lower left)  
 gouache and watercolor on paper  
 Image size: 11¾ x 8¾ in. (29 x 22 cm.)  
 Sheet size: 14¾ x 11¼ in. (37 x 29.7 cm.)  
 Executed in 1919  
 \$250,000-350,000



574  
**FERNAND LEGER (1881-1955)**  
*L'Usine*  
 signed with initials and dated 'F.L. 19' (lower right)  
 gouache and watercolor over pencil on paper  
 13½ x 16¾ in. (34.3 x 42.7 cm.)  
 Painted in 1919  
 \$180,000-250,000



575  
**FRANTISEK KUPKA (1871-1957)**  
*Sans titre*  
 stamped 'Kupka' (lower right)  
 gouache on paper  
 7¾ x 6¼ in. (20 x 16 cm.)  
 Painted circa 1930-1935  
 \$10,000-15,000



576  
**SONIA DELAUNAY (1885-1979)**  
*Chocolat*  
 signed and numbered 'Sonia Delaunay 582' (lower right)  
 pastel on paper laid down on card  
 14¼ x 9¼ in. (36.2 x 23.5 cm.)  
 Executed in 1914  
 \$15,000-20,000

PROPERTY OF AN AMERICAN ESTATE

577  
**SONIA DELAUNAY (1885-1979)**  
*Rythme coloré*  
 signed and dated 'Sonia Delaunay 1954' (lower right)  
 gouache on paper  
 22¾ x 30 in. (57.4 x 76.2 cm.)  
 Painted in Paris in 1954  
 \$80,000-120,000



PROPERTY FROM THE ORANGE BLOSSOM COLLECTION

578  
**JOAN MIRO (1893-1983)**  
*Sans titre*  
 signed 'Miró' (lower right); signed again with initials, dated and dedicated 'M 13./XI/75. a la Senyora de Sicart, a José Ll. Sicart, amb total meu afecte' (on the reverse)  
 gouache, brush and black and India inks and colored wax crayons on Japan paper  
 16½ x 21¾ in. (41.9 x 55.6 cm.)  
 Executed on 13 November 1975  
 \$120,000-180,000





PROPERTY FROM A NEW MEXICO COLLECTION

579

**PABLO PICASSO (1881-1973)**

*Etreinte*

signed and dated 'Picasso 4. Avril.. 72.' (lower right)  
colored wax crayon and green ballpoint pen on paper  
21 $\frac{1}{8}$  x 16 $\frac{1}{8}$  in. (54.8 x 41.7 cm.)  
Executed on 4 April 1972

\$150,000-250,000



PROPERTY FROM A PRIVATE FLORIDA COLLECTION

580

**ALBERTO GIACOMETTI (1901-1966)**

*Tête de Diego et tête effacée (recto); Tête (verso)*

signed and dated 'Alberto Giacometti 1947' (lower right; recto)  
pencil on paper (recto and verso)  
21 $\frac{1}{4}$  x 14 $\frac{1}{2}$  in. (53.9 x 36.8 cm.)  
Drawn in 1947

\$40,000-60,000



PROPERTY FROM A PRIVATE AMERICAN COLLECTION

581

**HENRI MATISSE (1869-1954)**

*Femme assise (Lucienne Bernard)*

signed and dated 'H Matisse mai 46' (lower left)  
charcoal and estompe on paper  
23 $\frac{7}{8}$  x 15 $\frac{3}{4}$  in. (60.7 x 39.9 cm.)  
Executed in May 1946

\$150,000-250,000

PROPERTY FROM A TEXAS ESTATE

582

**BERTHE MORISOT (1841-1895)**

*Le Flageolet*

indistinctly stamped with signature twice (lower left and lower center)  
pencil on tracing paper  
14 x 10 $\frac{7}{8}$  in. (35.5 x 27.4 cm.)  
Drawn in Mézy in 1890

\$12,000-18,000



PROPERTY FROM A PRESTIGIOUS PRIVATE COLLECTION

583

**EDGAR DEGAS (1834-1917)**

*Etude de danseuses*

stamped with signature 'Degas' (Lugt 658; lower right)  
pastel, charcoal and white heightening on paper  
18 $\frac{3}{4}$  x 24 $\frac{1}{2}$  in. (47.5 x 62.3 cm.)

\$200,000-300,000



PROPERTY FROM A NEW YORK COLLECTION

584

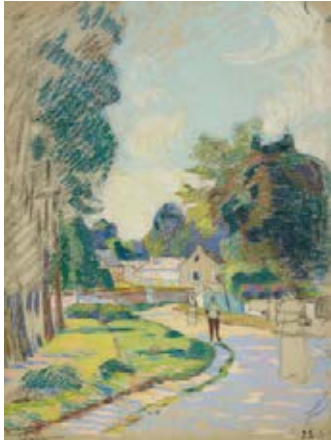
**EDGAR DEGAS (1834-1917)**

*Femme assise sur un divan*

with atelier stamp (Lugt 657; on the reverse)  
pastel on brown paper  
15 $\frac{3}{4}$  x 15 $\frac{3}{4}$  in. (39.8 x 39.8 cm.)

\$70,000-100,000





PROPERTY FROM THE ORANGE BLOSSOM COLLECTION

585

**ARMAND GUILLAUMIN (1841-1927)**

*Une rue en Ile-de-France*

signed twice 'Guillaumin' (lower left) and dated '93' (lower right)  
pastel and black Conté crayon on toned paper  
25¾ x 19¾ in. (65 x 50.4 cm.)  
Drawn in 1893

\$7,000-10,000



588

**MARIE LAURENCIN (1883-1956)**

*Le couronnement du chien noir*

signed 'Marie Laurencin' (upper right)  
watercolor, charcoal, colored pencils and pencil on paper  
17 x 13 in. (43.2 x 32.9 cm.)  
Executed circa 1938

\$12,000-18,000



PROPERTY FROM A PARK AVENUE COLLECTION

586

**HONORE DAUMIER (1808-1879)**

*Une grand'maman*

signed with initials 'h.D.' (lower left)  
pen and black ink and ink wash on paper laid down on paper  
9¾ x 12 in. (24.4 x 30.5 cm.)

\$30,000-50,000



PROPERTY FROM A PRIVATE ATLANTA COLLECTION

589

**MARC CHAGALL (1887-1985)**

*L'Atelier*

signed 'Marc Chagall' (lower right)  
pastel, colored wax crayons and sanguine on paper  
20¼ x 26¾ in. (51.3 x 68 cm.)  
Drawn in 1976

\$150,000-250,000



PROPERTY FROM A PARK AVENUE COLLECTION

587

**HONORE DAUMIER (1808-1879)**

*Omnibus*

pen and black and brown inks, ink wash and charcoal on paper  
11 x 14½ in. (27.7 x 37 cm.)

\$40,000-60,000



590

**BERNARD BUFFET (1928-1999)**

*Tournesols et melon*

signed and dated 'B. Buffet 55' (upper left) and signed and dated again  
and inscribed 'Bernard Buffet 55 A Jean Blaque amicalement  
Le 4 Octobre 1955' (lower center)  
watercolor and brush and India ink on paper  
25½ x 19¾ in. (64.8 x 49.9 cm.)  
Painted on 4 October 1955

\$20,000-30,000



PROPERTY FROM THE ORANGE BLOSSOM COLLECTION

591

**JEAN DUFY (1888-1964)**

*Honfleur, le bassin du Centre*

signed 'Jean Dufy' (lower right)  
gouache and watercolor on paper laid down on canvas  
18½ x 24½ in. (46 x 62.2 cm.)  
Painted circa 1955

\$8,000-12,000



592

**JEAN DUFY (1888-1964)**

*Clowns musiciens*

signed 'Jean Dufy' (lower right)  
gouache and watercolor on paper laid down on canvas  
11 x 14½ in. (28 x 36 cm.)  
Painted circa 1960

\$15,000-20,000



593

**BERNARD BUFFET (1928-1999)**

*Tête de clown*

signed and dated 'Bernard Buffet 55' (upper right)  
watercolor, pen and brush and India ink and pencil on paper  
25½ x 19¾ in. (65 x 50 cm.)  
Executed in 1955

\$80,000-120,000



PROPERTY FROM A PARK AVENUE COLLECTION

594

**MAURICE UTRILLO (1883-1955)**

*Eglise Saint-Colonne en Andorre*

signed and dated 'Maurice, Utrillo, V, 1933,' (lower right) and inscribed  
'Clocher roman de Sainte Colona (Vallée d'Andorre)-' (lower left)  
gouache and watercolor on paper laid down on card  
18½ x 12½ in. (46.9 x 30.9 cm.)  
Painted in 1933

\$12,000-18,000



595

**RAOUL DUFY (1877-1953)**

*Vers le départ*

signed 'Raoul Dufy' (lower center)  
gouache and watercolor on paper  
19¾ x 25¾ in. (50 x 65.2 cm.)

\$60,000-80,000

A FASHIONABLE LIFE: THE COLLECTION OF AN ELEGANT LADY

596

**HENRI MATISSE (1869-1954)**

*Tête de femme*

signed and dated 'Matisse 48' (lower left)  
black Conté crayon on paper  
13 x 17½ in. (33 x 43.7 cm.)  
Drawn in Paris in 1948

\$40,000-60,000



Property from the Collection of  
Fritz and Lucy Jewett



PROPERTY FROM A PRIVATE COLLECTOR

597

**HENRI MATISSE (1869-1954)**

*Etudes de boucs (recto); Feuilles (verso)*

pencil on paper (recto); pen and blue ink and pencil on paper (verso)  
11½ x 15 in. (28.2 x 38.2 cm.)  
Executed circa 1943

\$10,000-15,000



PROPERTY OF A GENTLEMAN

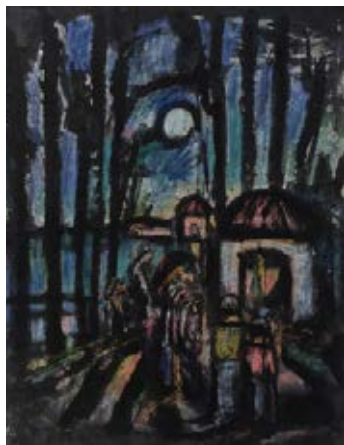
598

**RAOUL DUFY (1877-1953)**

*Chinon (Quinone)*

signed and titled 'Chinon Raoul Dufy' (lower left)  
watercolor on paper  
19¾ x 25½ in. (50 x 64.6 cm.)  
Painted in 1938

\$40,000-60,000



PROPERTY FROM A PARK AVENUE COLLECTION

599

**GEORGES ROUAULT (1871-1958)**

*Nocturne*

signed and dated 'G. Rouault 1930' (lower right)  
pastel and brush and black and India inks on paper  
24¾ x 19¼ in. (62 x 49 cm.)  
Executed in 1930

\$40,000-60,000

PROPERTY FROM THE COLLECTION OF DOROTHY TAPPER GOLDMAN

600

**BERNARD BUFFET (1928-1999)**

*Les Chants de Maldoror, Table et chaise dans un intérieur*

pencil on graph paper laid down on paper  
Image size: 4½ x 4½ in. (10.4 x 10.4 cm.)  
Drawn in 1952

\$2,000-3,000



601

**HENRY MOORE (1898-1986)**

*Eight Reclining Figures*

signed and dated 'Moore 66.' (lower right)  
watercolor and ball-point and felt-tip pens on tissue paper  
laid down on paper  
11¾ x 9¾ in. (29 x 23.8 cm.)  
Executed in 1966

\$12,000-18,000



PROPERTY FROM AN EXCEPTIONAL PRIVATE COLLECTION

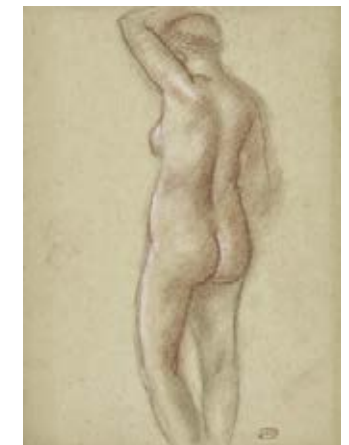
602

**ARISTIDE MAILLOL (1861-1944)**

*Nu de dos*

stamped with monogram (Lugt 1852a; lower right); with atelier stamp (Lugt 1777a; on the reverse)  
pastel, charcoal and sanguine on paper  
14¾ x 10¾ in. (37.4 x 27.2 cm.)  
Drawn circa 1940

\$5,000-7,000





An impressionist landscape painting showing a wide river valley. The foreground is dominated by a large, dark tree on the left and several tall, thin, reddish-brown trees on the right. The middle ground features a wide river with blue and white brushstrokes, winding through a valley with green and brown fields. In the background, there are rolling hills and a town with small buildings. The sky is a mix of light blue and white, with visible brushstrokes. The overall style is characteristic of Impressionism, with a focus on light and color.

# Impressionist and Modern Art Day Sale

Saturday 18 May 2024  
2.00pm (Lots 701-855)



Scan to view  
full auction online



PROPERTY FROM A PARK AVENUE COLLECTION

701

**MAX ERNST (1891-1976)**

*Paysage*

signed 'max ernst' (lower right)  
oil and decalcomania on panel  
5 7/8 x 3 3/8 in. (13.8 x 8.6 cm.)  
Painted circa 1952

\$40,000-60,000

PROPERTY FROM A PARK AVENUE COLLECTION

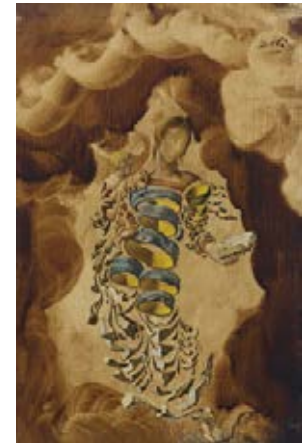
704

**SALVADOR DALI (1904-1989)**

*Madone corpusculaire*

signed 'Dali' (upper right)  
oil on canvas  
8 x 5 7/8 in. (20.3 x 13.6 cm.)  
Painted in 1952

\$150,000-250,000



702

**MAN RAY (1890-1976)**

*Boardwalk (Two Works)*

signed in ink (recto); titled and annotated in pencil (verso)  
gelatin silver print  
Image size: 6 1/4 x 6 5/8 in. (15.8 x 16.8 cm.)  
Sheet size: 6 1/2 x 7 1/8 in. (16.5 x 18 cm.)  
Executed in 1919

signed and dated 'Man Ray 1917-1973' (lower right) and titled  
and numbered 'BOARDWALK 2/9' (lower left)  
brush and black ink, felt-tip pen, wood, cord, fabric and furniture knobs  
on panel  
22 3/4 x 25 1/4 in. (57.8 x 64 cm.)  
Conceived in 1917; this version executed in 1973

\$20,000-30,000

(2)

PROPERTY OF A GENTLEMAN

705

**GIORGIO DE CHIRICO (1888-1978)**

*Cavalli in un paese*

signed 'g. de Chirico' (lower right)  
oil on canvas  
19 x 23 3/8 in. (47.3 x 60.3 cm.)  
Painted in 1940-1942

\$70,000-100,000



PROPERTY FROM A DISTINGUISHED PALM BEACH COLLECTION

703

**JEAN (HANS) ARP (1886-1966)**

*Idole des lapins*

numbered '5/5' (on the underside)  
polished bronze on slate base  
Height (including base): 17 1/2 in. (44.5 cm.)  
Conceived in 1965 and cast in 1967

\$70,000-100,000



PROPERTY FROM THE COLIN FAMILY COLLECTION

706

**JEAN (HANS) ARP (1886-1966)**

*Cravate à la tension silencieuse*

black granite  
Height: 7 3/4 in. (19.7 cm.)  
Length: 11 1/8 in. (32 cm.)  
Conceived in 1932 and carved in 1947; unique

\$80,000-120,000





707

**LEONOR FINI (1907-1996)**

*Visage imaginaire no. 79*

signed 'Leonor Fini' (lower right)  
oil on canvas  
16 1/8 x 13 in. (41 x 32.9 cm.)  
Painted in 1986

\$12,000-18,000

PROPERTY FROM THE EVERSON MUSEUM OF ART,  
SOLD TO BENEFIT ACQUISITIONS AND COLLECTIONS CARE

710

**GUSTAVE LOISEAU (1865-1935)**

*Bord de la rivière*

oil on canvas  
18 1/4 x 10 5/8 in. (46.4 x 26.9 cm.)  
Painted circa 1901

\$15,000-20,000



Property from the Collection of  
Fritz and Lucy Jewett



708

**EDGAR DEGAS (1834-1917)**

*Danseuse saluant*

stamped with signature, numbered and stamped with foundry mark  
'Degas AA Hébrard Cire Perdue 31/1' (Lugt 658; on the top of the base)  
bronze with light brown patina  
Height: 9 in. (22.9 cm.)  
Original wax model executed in 1885-1890; this bronze version cast in an  
edition numbered A to T, plus two casts reserved for the Degas heirs and  
the founder Hébrard, marked HER.D and HER, respectively

\$80,000-120,000

711

**MAXIMILIEN LUCE (1858-1941)**

*La maison de Suzanne Valadon*

signed and dated 'Luce. 95' (lower left)  
oil on canvas  
19 5/8 x 31 1/4 in. (49.8 x 79.2 cm.)  
Painted in 1895

\$200,000-300,000



Property from the Collection of  
Fritz and Lucy Jewett



PROPERTY FROM THE ESTATE OF WILLIAM M. GRAVES

709

**MAXIMILIEN LUCE (1858-1941)**

*Paysage à Saint-Tropez*

signed 'Luce' (lower left)  
oil on board  
10 1/4 x 15 1/4 in. (26 x 39.8 cm.)  
Painted in 1892

\$12,000-18,000

PROPERTY OF AN AMERICAN ESTATE

◊♦712

**FRANCIS PICABIA (1879-1953)**

*Le bouquet, Saint-Tropez*

signed and dated 'Picabia 1909' (lower right); signed and dated again  
and titled 'F. Picabia Le Bouquet St. Tropez 1909' (on the reverse)  
oil on canvas  
35 1/4 x 45 3/4 in. (89.2 x 116.2 cm.)  
Painted in January-February 1909

\$300,000-500,000





PROPERTY OF A GENTLEMAN

713

**HENRI LE SIDANER (1862-1939)**

*La Roseraie, Gerberoy*

signed twice 'Le Sidaner' (lower left and lower right)  
oil and colored crayons on paper laid down on canvas  
13¾ x 11½ in. (35 x 28.3 cm.)  
Painted in July 1926

\$60,000-80,000



714

**YVONNE CANU (1921-2008)**

*Les Lavandières*

signed 'canu' (lower left); signed again, titled and numbered  
'354 Les Lavandières. Canu' (on the reverse)  
oil on canvas  
18 x 21½ in. (46 x 54.7 cm.)

\$8,000-12,000



PROPERTY FROM A DISTINGUISHED COLLECTION

715

**PIERRE-AUGUSTE RENOIR (1841-1919)**

*Paysage*

signed 'Renoir.' (lower right)  
oil on canvas  
8⅞ x 12⅞ in. (22 x 32 cm.)  
Painted circa 1900

\$180,000-250,000

PROPERTY FROM A PARK AVENUE COLLECTION

716

**HENRI MATISSE (1869-1954)**

*Paysage de Bretagne*

signed 'Henri-Matisse' (lower right)  
oil on canvas  
15 x 18¼ in. (38.3 x 46.4 cm.)  
Painted in 1897

\$150,000-250,000



PROPERTY FROM A PARK AVENUE COLLECTION

717

**PAUL CEZANNE (1839-1906)**

*Paysage*

oil on paper laid down on canvas  
8 x 8¼ in. (20.4 x 21 cm.)  
Painted circa 1865

\$100,000-150,000



PROPERTY FROM A PARK AVENUE COLLECTION

718

**HENRI FANTIN-LATOURE (1836-1904)**

*Roses*

signed and dated 'Fantin. 73.' (upper right)  
oil on canvas  
12⅞ x 12⅞ in. (32.5 x 32.5 cm.)  
Painted in 1873

\$80,000-120,000





PROPERTY FROM A PRIVATE CALIFORNIA COLLECTION

719

**AUGUSTE RODIN (1840-1917)**

*L'Ombre, taille originale dite taille de la Porte*

signed 'A. Rodin' (on the top of the base); inscribed with foundry mark 'Georges Rudier. Fondateur. Paris.' (on the left side of the base); inscribed and dated '© by Musée Rodin 1956' (on the back of the base); with raised signature 'A. Rodin' (on the underside)  
bronze with dark brown patina  
Height: 37½ in. (95.4 cm.)  
Conceived in 1880 and cast in 1956

\$250,000-350,000



720

**MAXIMILIEN LUCE (1858-1941)**

*La route aux environs de Méréville*

signed and dated 'Luce 1902' (lower right)  
oil on canvas  
32 x 25¼ in. (81.3 x 65.4 cm.)  
Painted in 1902

\$50,000-70,000



PROPERTY FROM A PRIVATE AMERICAN ART COLLECTOR

721

**AUGUSTE HERBIN (1882-1960)**

*Le Pont Royal*

signed 'Herbin' (lower right)  
oil on canvas  
23½ x 28¾ in. (60 x 73 cm.)  
Painted in 1903

\$40,000-60,000

722

**EUGENE BOUDIN (1824-1898)**

*Le port de Trouville*

signed, dated and inscribed 'E. Boudin 94. Trouville' (lower right)  
oil on panel  
14¾ x 18½ in. (37.3 x 46 cm.)  
Painted in 1894

\$100,000-150,000



Property from the Collection of  
Fritz and Lucy Jewett

723

**EUGENE BOUDIN (1824-1898)**

*Le Havre, Le Bassin de la Barre*

signed and dated, 'E. Boudin. 90' (lower left); dated again and inscribed 'Le Havre 11 7bre 89' (lower right)  
oil on panel  
12¾ x 16½ in. (32 x 41 cm.)  
Painted in 1889-1890

\$60,000-80,000



PROPERTY FROM A PARK AVENUE COLLECTION

724

**ODILON REDON (1840-1916)**

*La Barque*

signed 'ODILON REDON' (lower right)  
oil on canvas  
21¾ x 18½ in. (55.4 x 46.1 cm.)  
Painted circa 1901

\$100,000-150,000





PROPERTY FROM A PARK AVENUE COLLECTION

725

**GEORGES SEURAT (1859-1891)**

*Hiver en banlieue*

oil on panel  
6¼ x 9¾ in. (16 x 24.9 cm.)  
Painted circa 1883

\$200,000-300,000



PROPERTY FROM A PARK AVENUE COLLECTION

726

**CLAUDE MONET (1840-1926)**

*Prairie à Giverny*

signed and dated 'Claude Monet 86' (lower left)  
oil on canvas  
36½ x 32 in. (92.7 x 81.3 cm.)  
Painted in 1886

\$2,000,000-3,000,000



PROPERTY FROM A PRESTIGIOUS PRIVATE COLLECTION

727

**EDGAR DEGAS (1834-1917)**

*Cheval marchant au pas relevé*

stamped with signature, numbered and stamped with foundry mark  
'Degas 11/D A.A. HÉBRARD CIRE PERDUE' (Lugt 658; on the top of the base)  
bronze with reddish brown patina  
Height: 8⅞ in. (22.8 cm.)  
Original wax model probably executed before 1881; this bronze version cast between 1919 and 1921 in an edition of twenty-two numbered A to T, plus two casts reserved for the Degas heirs and Hébrard marked HER and HER.D respectively

\$380,000-550,000

728

**MARC CHAGALL (1887-1985)**

*Le clown flûtiste au coq*

stamped with signature 'Marc Chagall' (lower left)  
oil and tempera on canvasboard  
10⅝ x 8¾ in. (27 x 19.8 cm.)  
Painted circa 1970-1975

\$180,000-250,000



729

**GEORGES BRAQUE (1882-1963)**

*Oiseau et feuillage*

oil on paper laid down on canvas  
19¼ x 24⅞ in. (49 x 63.5 cm.)  
Painted in 1962

\$80,000-120,000



PROPERTY FROM A PRIVATE AMERICAN COLLECTION

730

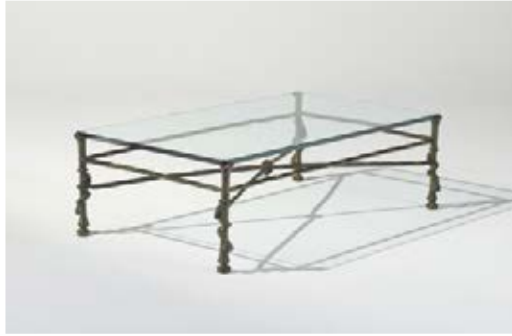
**GIORGIO MORANDI (1890-1964)**

*Natura morta*

signed 'Morandi' (lower center)  
oil on canvas  
13¾ x 11⅞ in. (35.2 x 30.2 cm.)  
Painted in 1949

\$500,000-700,000





731  
**DIEGO GIACOMETTI (1902-1985)**  
*Table torsade*

signed 'Diego' (on the cross-bars nine times)  
bronze with brown and green patina  
Height: 15½ in. (39.4 cm.)  
Length: 55¼ in. (140.3 cm.)  
Depth: 29¼ in. (74.2 cm.)  
Conceived *circa* 1965

\$200,000-300,000

PROPERTY FROM A PRIVATE COLLECTION

734  
**HENRI LAURENS (1885-1954)**  
*L'Aurore*

signed with monogram, numbered and stamped with foundry mark  
'4/6 C. VALSUANI CIRE PERDUE' (on the top of the base)  
bronze with dark brown patina  
Height: 18½ in. (47 cm.)  
Conceived in 1944

\$180,000-250,000



732  
**PABLO PICASSO (1881-1973)**  
*Citrons et verre*

signed 'Picasso' (upper left); dated '14.1.44.' (on the reverse)  
oil on canvas  
10% x 16¼ in. (26.7 x 41.3 cm.)  
Painted on 14 January 1944

\$1,000,000-1,500,000

735  
**FERNAND LEGER (1881-1955)**  
*La plante jaune*

signed and dated 'F. LÉGER. 37' (lower right)  
oil on canvas  
28% x 36¼ in. (72.7 x 92.2 cm.)  
Painted in 1937

\$500,000-700,000



PROPERTY FROM A PRIVATE COLLECTION

733  
**JULIO GONZALEZ (1876-1942)**  
*Maternité*

oil on board  
16 x 12⅞ in. (40.8 x 32.7 cm.)  
Painted in 1937-1939

\$25,000-35,000

SOLD WITH THE APPROVAL OF THE TRUSTEES OF  
THE PHILADELPHIA MUSEUM OF ART TO BENEFIT ACQUISITION FUNDS

736  
**OSSIP ZADKINE (1890-1967)**  
*Le Discobole*

signed 'O. ZADKINE' (on the top of the base)  
carved pear-tree wood on concrete base  
Height (including base): 99% in. (253.3 cm.)  
Carved in 1928

\$100,000-150,000





SOLD WITH THE APPROVAL OF THE TRUSTEES OF THE PHILADELPHIA MUSEUM OF ART TO BENEFIT ACQUISITION FUNDS

737

**OSSIP ZADKINE (1890-1967)**

*Niobé*

signed 'O. ZADKINE' (on the top of the base)  
carved pear-tree wood on concrete base  
Height (including base): 98¾ in. (250.9 cm.)  
Carved in 1929

\$70,000-100,000



PROPERTY FROM A PROMINENT CHICAGO COLLECTION

738

**JACQUES LIPCHITZ (1891-1973)**

*Study for Musical Instruments: Maquette No. 2*

signed, numbered and marked with artist's thumbprint 'JLipchitz 4/7' (on the back)  
bronze with dark brown patina  
Height: 8¾ in. (21.9 cm.)  
Conceived in 1923

\$12,000-18,000



PROPERTY FROM A PRIVATE COLLECTION

739

**AUGUSTE HERBIN (1882-1960)**

*Le Pont Marie, côté aval*

signed 'herbin' (lower left)  
oil on canvas  
7½ x 9½ in. (19 x 24 cm.)  
Painted in 1912

\$15,000-20,000



PROPERTY FROM A PRIVATE COLLECTION

740

**MAURICE DE VLAMINCK (1876-1958)**

*Nature morte à la palette et aux fruits*

signed 'Vlaminck' (lower right)  
oil on canvas  
23½ x 28¾ in. (60 x 73 cm.)  
Painted circa 1914

\$50,000-70,000



PROPERTY FROM A PRIVATE COLLECTION

741

**JEAN METZINGER (1883-1956)**

*Dame au décolleté (Madame Metzinger)*

signed 'Metzinger' (lower right)  
oil on canvas  
28¾ x 22¼ in. (72.8 x 56.2 cm.)  
Painted circa 1910-1912

\$200,000-300,000



PROPERTY FROM A PRIVATE AMERICAN COLLECTION

742

**ALBERT GLEIZES (1881-1953)**

*Femme assise*

signed and dated 'Alb Gleizes .19' (lower right)  
oil on canvas  
28¾ x 23½ in. (72.7 x 59.8 cm.)  
Painted in 1919

\$150,000-250,000





PROPERTY FROM A PRIVATE COLLECTION

743

**AUGUSTE HERBIN (1882-1960)**

*Nature morte à la cloche de verre*

signed 'herbin' (lower left)  
oil on canvas  
26¼ x 22¼ in. (66.8 x 56.4 cm.)  
Painted in 1911

\$50,000-70,000



744

**GEORGES BRAQUE (1882-1963)**

*Nature morte*

oil on canvas  
25½ x 31⅞ in. (65.2 x 81 cm.)  
Painted in 1948

\$180,000-250,000



PROPERTY FROM A DISTINGUISHED PALM BEACH COLLECTION

745

**GIACOMO MANZU (1908-1991)**

*Cardinale seduto*

with raised signature and foundry mark 'Manzù NFMM'  
(on the top of the base)  
bronze with brown patina  
Height: 16½ in. (42 cm.)  
Conceived and cast in 1958

\$20,000-30,000

PROPERTY FROM A PARK AVENUE COLLECTION

746

**JACQUES VILLON (1875-1963)**

*L'arbre rouge*

signed 'Jacques Villon' (lower right); signed again, dated and titled  
'Jacques Villon 48 L'ARBRE ROUGE' (on the reverse)  
oil on canvas  
10½ x 16⅞ in. (26.9 x 41 cm.)  
Painted in 1948

\$8,000-12,000



PROPERTY FROM A DISTINGUISHED PRIVATE COLLECTION

747

**ALBERT GLEIZES (1881-1953)**

*Sans titre*

signed and dated 'Alb Gleizes. 1930-31.' (lower right)  
oil on canvas  
63½ x 57¼ in. (161.3 x 145.5 cm.)  
Painted in 1930-1931

\$60,000-80,000



PROPERTY SOLD WITH THE INTENT TO BENEFIT  
NEWPORT FESTIVALS FOUNDATION, INC.

♦748

**MARC CHAGALL (1887-1985)**

*Le Songe*

signed 'Marc Chagall' (lower right); signed again 'Marc Chagall'  
(on the reverse)  
oil and tempera on canvas  
31⅞ x 23¾ in. (81 x 60.2 cm.)  
Painted in 1976

\$800,000-1,200,000





THE COLLECTION OF LOIS AND PHILLIP MACHT

749

**LOUIS VALTAT (1869-1952)**

*Physallis et pommes*

signed 'L. Valtat' (lower left)  
oil on canvas  
10 $\frac{3}{8}$  x 8 $\frac{3}{4}$  in. (26.7 x 22.2 cm.)  
Painted in 1941

\$5,000-7,000



PROPERTY FROM THE ORANGE BLOSSOM COLLECTION

752

**CHARLES CAMOIN (1879-1965)**

*Le panier de poires sur la table ronde*

signed 'Ch Camoin,' (lower right)  
oil on canvas  
14 $\frac{7}{8}$  x 21 $\frac{1}{8}$  in. (37.8 x 55 cm.)  
Painted in 1921

\$8,000-12,000



PROPERTY FROM THE ORANGE BLOSSOM COLLECTION

750

**DAVID BURLIUK (1882-1967)**

*Flowers in the Snow*

signed and dated 'Burliuk. 1964.' (lower right)  
oil on burlap  
32 $\frac{1}{4}$  x 23 $\frac{1}{8}$  in. (81.9 x 60.9 cm.)  
Painted in 1964

\$8,000-12,000



PROPERTY FROM THE ORANGE BLOSSOM COLLECTION

753

**MAURICE DE VLAMINCK (1876-1958)**

*Vase de fleurs*

signed 'Vlaminck' (lower left)  
oil on canvas  
18 $\frac{1}{4}$  x 15 in. (46.2 x 38.3 cm.)  
Painted circa 1948-1952

\$40,000-60,000



751

**BERNARD BUFFET (1928-1999)**

*Bouquet dans une théière*

signed 'Bernard Buffet' (upper right) and dated '1998' (lower right)  
oil on canvas  
31 $\frac{3}{4}$  x 23 $\frac{1}{2}$  in. (80.7 x 59.8 cm.)  
Painted in 1998

\$60,000-80,000

754

**BALTASAR LOBO (1910-1993)**

*Pensive à genoux, 2ème état*

signed and numbered 'Lobo 7/8' (on the top of the base); inscribed and stamped with foundry marks 'Susse Fondeur Paris RESYRGAM' (on the back of the base)  
bronze with green and brown patina  
Height: 25 in. (63.5 cm.)  
Conceived in 1977-1990

\$60,000-80,000





PROPERTY FROM A PRIVATE AMERICAN COLLECTION

755

**HENRY MOORE (1898-1986)**

*Reclining Figure: Blanket*

bronze with brown patina  
Length (including base): 9½ in. (23.8 cm.)  
Height (including base): 5¼ in. (13.3 cm.)  
Conceived in 1939

\$80,000-120,000



PROPERTY FROM A PRIVATE AMERICAN COLLECTION

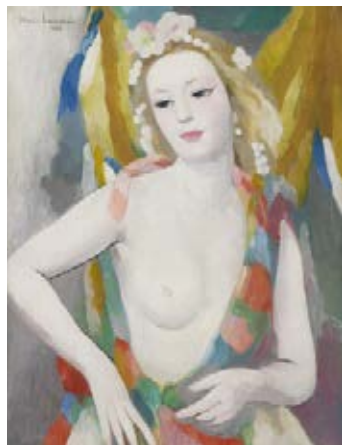
756

**HENRY MOORE (1898-1986)**

*Reclining Figure*

signed and numbered 'Moore 1/7' (on the back);  
stamped with foundry mark 'NOACK BERLIN' (on the underside)  
bronze with dark brown patina  
Length: 7 in. (17.8 cm.)  
Conceived in 1937

\$60,000-80,000



757

**MARIE LAURENCIN (1883-1956)**

*Modèle*

signed and dated 'Marie Laurencin 1936' (upper left)  
oil on canvas  
23¾ x 19¾ in. (60 x 50 cm.)  
Painted in 1936

\$80,000-120,000

PROPERTY FROM THE ORANGE BLOSSOM COLLECTION

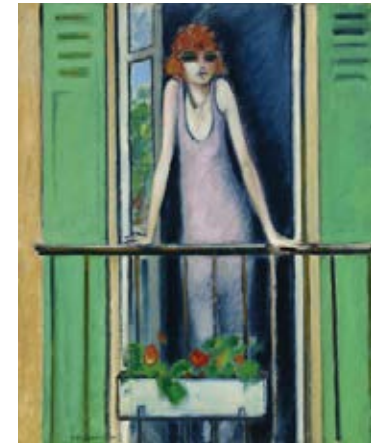
758

**JEAN-PIERRE CASSIGNEUL (B. 1935)**

*Au Balcon*

signed and dated 'CASSIGNEUL 70' (lower left); signed and dated again  
and titled "'Au Balcon'" Cassigneul 1970.' (on the reverse)  
oil on canvas  
31¼ x 25½ in. (80.6 x 65.1 cm.)  
Painted in 1970

\$50,000-70,000



759

**MAURICE UTRILLO (1883-1955)**

*Le maquis de Montmartre*

signed 'Maurice, Utrillo, V.' (lower right)  
and inscribed 'Montmartre-' (lower left)  
oil on canvas  
38¼ x 76½ in. (96.7 x 193.3 cm.)  
Painted circa 1935

\$500,000-700,000



760

**BERNARD BUFFET (1928-1999)**

*Intérieur provençal*

signed and dated 'Bernard Buffet 53' (upper right)  
oil on canvas  
19¾ x 24 in. (49.9 x 61 cm.)  
Painted in 1953

\$70,000-100,000



Property from the Collection of  
Fritz and Lucy Jewett



PROPERTY OF A GENTLEMAN

761

**ALBERT MARQUET (1875-1947)**

*La Place*

signed 'marquet' (lower left)  
oil on panel  
13 x 16 $\frac{1}{8}$  (33 x 41 cm.)

\$50,000-70,000



762

**MAXIMILIEN LUCE (1858-1941)**

*Kermouster, Embouchure du Trieux*

stamped with signature 'Luce' (lower left)  
oil on canvas  
18 $\frac{1}{8}$  x 25 $\frac{3}{8}$  in. (46 x 64.5 cm.)  
Painted circa 1914-1915

\$30,000-50,000



763

**GUSTAVE LOISEAU (1865-1935)**

*Tournant de rivière, L'Eure*

signed 'G. Loiseau' (lower left)  
oil on canvas  
25 $\frac{1}{2}$  x 32 in. (65.1 x 81 cm.)  
Painted in 1926

\$40,000-60,000

764

**MAURICE UTRILLO (1883-1955)**

*Moulin de la Galette, Montmartre*

signed 'Maurice, Utrillo, V.' (lower right)  
oil on canvas  
18 $\frac{1}{4}$  x 21 $\frac{1}{4}$  in. (46.5 x 55.4 cm.)  
Painted circa 1951

\$40,000-60,000



765

**BERNARD BUFFET (1928-1999)**

*Nature morte au compotier*

signed and dated 'Bernard Buffet 56' (upper left)  
oil on canvas  
28 $\frac{3}{4}$  x 36 $\frac{1}{8}$  in. (73 x 91.7 cm.)  
Painted in 1956

\$70,000-100,000



766

**MARINO MARINI (1901-1980)**

*Acrobati*

with raised initials 'M.M.' (on the top of the base)  
bronze with brown patina  
Height: 22 $\frac{1}{2}$  in. (57 cm.)  
Conceived in 1954

\$30,000-50,000





PROPERTY FROM A PRIVATE COLLECTION, FLORIDA

767

**AUGUSTE RODIN (1840-1917)**

*Cariatide à l'urne, taille originale dite aussi petit modèle*

signed 'A. Rodin' (on the top of the base); inscribed with foundry mark 'Alexis. RUDIER..Fondeur. PARIS.' (on the back of the base); with raised signature 'A. Rodin' (on the underside)  
bronze with brown and green patina  
Height: 16 in. (40.5 cm.)  
Conceived *circa* 1881-1882 and cast in 1927

\$180,000-250,000



768

**ODILON REDON (1840-1916)**

*La Désespérance, dit aussi La Souffrance*

signed 'ODILON REDON' (lower left)  
oil on paper laid down on cradled panel  
28 x 20 $\frac{1}{2}$  in. (71.1 x 53 cm.)

\$100,000-150,000



769

**MAURICE DENIS (1870-1943)**

*Vierge de Saint-Gonery*

signed and dated 'MAURICE DENIS 22' (lower left)  
oil on canvas  
27 $\frac{1}{2}$  x 21 $\frac{1}{2}$  in. (70 x 54.8 cm.)  
Painted in 1922

\$60,000-80,000

770

**PAUL SERUSIER (1864-1927)**

*Jeune bretonne au pot vermillon et fillette agenouillée*

signed 'P Sérusier' (lower right)  
oil on paper laid down on canvas  
36 $\frac{1}{2}$  x 28 $\frac{1}{2}$  in. (92.5 x 73.5 cm.)  
Executed in Huelgoat *circa* 1891-1893

\$400,000-600,000



PROPERTY FROM A NEW YORK COLLECTION

771

**HENRI DE TOULOUSE-LAUTREC (1864-1901)**

*Allégorie: Le printemps de la vie*

signed with monogram (lower left)  
oil on canvas  
21 $\frac{1}{2}$  x 16 $\frac{1}{2}$  in. (55.5 x 42.2 cm.)  
Painted in 1883

\$150,000-250,000



PROPERTY FROM A WEST COAST PRIVATE COLLECTION

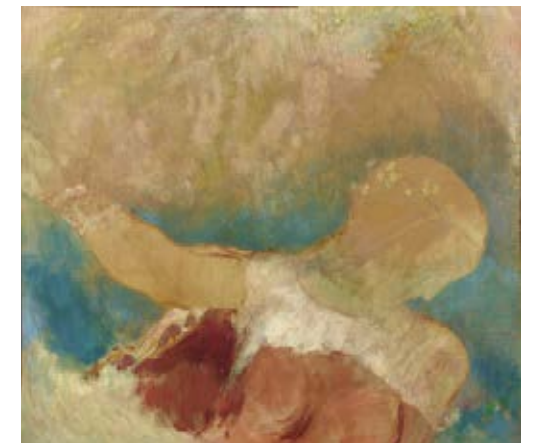
772

**ODILON REDON (1840-1916)**

*Ophélie*

signed 'ODILON REDON' (lower center)  
oil on paper laid down on canvas  
18 $\frac{1}{2}$  x 21 $\frac{1}{2}$  in. (47.8 x 54.1 cm.)

\$70,000-100,000





PROPERTY FROM A PARK AVENUE COLLECTION

773

**PIERRE-AUGUSTE RENOIR (1841-1919)**

*Vierge et enfant d'après une faïence*

signed 'renoir.' (upper left)  
oil on canvas  
15¾ x 10½ in. (40.2 x 26.7 cm.)  
Painted *circa* 1902

\$80,000-120,000

776

**MAURICE BRAZIL PRENDERGAST (1859-1924)**

*Summer*

signed 'Prendergast' (lower right)  
oil on canvas  
29¾ x 42¾ in. (75.6 x 108.6 cm.)  
Painted *circa* 1918-1923

\$400,000-600,000



PROPERTY FROM THE UNIVERSITY OF TEXAS  
LAW SCHOOL FOUNDATION

774

**EDOUARD VUILLARD (1868-1940)**

*Jos Hessel et sa femme, rue de Rivoli*

signed 'E Vuillard' (lower right)  
oil on board  
24½ x 24¼ in. (62.4 x 61.7 cm.)  
Painted *circa* 1904

\$100,000-150,000

PROPERTY FROM THE COLLECTION OF  
MORTON AND NORMA LEE FUNGER

777

**FREDERICK CARL FRIESEKE (1874-1939)**

*Yellow Tulips*

signed 'F.C. Frieseke.' (lower right)  
oil on canvas  
32 x 32 in. (81.3 x 81.3 cm.)  
Painted *circa* 1911-1912

\$300,000-500,000



775

**MAURICE BRAZIL PRENDERGAST (1859-1924)**

*Still Life*

signed 'Prendergast' (lower left)  
oil on canvas  
16 x 21 in. (40.6 x 53.3 cm.)  
Painted *circa* 1910-1913

\$60,000-80,000

PROPERTY OF A GENTLEMAN

778

**HENRI LEBASQUE (1865-1937)**

*La Coiffure (Mme Lebasque coiffant sa fille)*

signed 'H. Lebasque' (lower right)  
oil on canvas  
21¾ x 18½ in. (54.9 x 46.2 cm.)  
Painted *circa* 1905-1906

\$60,000-80,000





779  
**CAMILLE PISSARRO (1830-1903)**  
*Baigneuses*  
 stamped with initials 'C.P.' (Lugt 613a; lower left)  
 oil on canvas  
 16¼ x 13⅞ in. (41.2 x 33.3 cm.)  
 Painted *circa* 1895  
 \$250,000-350,000



PROPERTY FROM A PRIVATE COLLECTION, USA  
 780  
**PIERRE-AUGUSTE RENOIR (1841-1919)**  
*Femme assise*  
 signed 'Renoir.' (lower left)  
 oil on canvas  
 Image size: 11¼ x 8 in. (28.7 x 20.2 cm.)  
 \$300,000-500,000



PROPERTY FROM A PARK AVENUE COLLECTION  
 781  
**HONORE DAUMIER (1808-1879)**  
*Le Fardeau*  
 oil on cradled panel  
 18⅞ x 14½ in. (46.1 x 37 cm.)  
 Painted *circa* 1855-1856  
 \$150,000-200,000

PROPERTY FROM THE ESTATE OF WILLIAM M. GRAVES

782  
**EDGAR DEGAS (1834-1917)**  
*Tête, étude pour le portrait de Mathilde Salle*  
 stamped with signature, numbered and stamped with foundry mark  
 'DEGAS A.A. HEBRARD CIRE PERDUE 7/J' (Lugt 658; on the back)  
 bronze with black and green patina  
 Height: 5½ in. (14 cm.)  
 Conceived in 1892; this bronze version cast at a later date in an edition  
 numbered A to T plus two casts reserved for the Degas heirs and the  
 founder Hébrard marked HER.D and HER respectively  
 \$8,000-12,000



783  
**PIET MONDRIAN (1872-1944)**  
*Oostzijdse Molen met panoramische  
 zonsondergang, Molen rechts (Oostzijdse Mill  
 with Panoramic Sunset, Mill at Right)*  
 signed and indistinctly signed 'Piet Mondriaan.' (lower left); signed again  
 and inscribed 'P. Mondriaan A. Briel Abcoude - Holland' (on the stretcher)  
 oil on canvas  
 39¼ x 49⅞ in. (99.7 x 125.5 cm.)  
 Painted in Abcoude *circa* 1907  
 \$300,000-500,000



784  
**ARMAND GUILLAUMIN (1841-1927)**  
*Chemin de l'abreuvoir, après la pluie*  
 signed 'Guillaumin' (lower left)  
 oil on canvas  
 19⅞ x 24 in. (50 x 61 cm.)  
 Painted *circa* 1903  
 \$35,000-55,000



Property from the Collection of  
 Fritz and Lucy Jewett



785

**MAXIMILIEN LUCE (1858-1941)**

*Rolleboise, Le petit bras de Seine*

stamped with signature 'Luce' (lower left); titled  
'Rolleboise - Le petit Bras-de-Seine' (on the stretcher)  
oil on canvas  
21½ x 28¾ in. (54.5 x 73.2 cm.)

\$20,000-30,000



PROPERTY FROM A DISTINGUISHED COLLECTION

786

**ALFRED SISLEY (1839-1899)**

*Le village de Champagne au coucher du soleil, avril*

signed 'Sisley.' (lower left)  
oil on canvas  
19¾ x 28¾ in. (50 x 73.8 cm.)  
Painted circa 1885

\$700,000-1,000,000



PROPERTY FROM THE ESTATE OF WILLIAM M. GRAVES

787

**EUGENE BOUDIN (1824-1898)**

*Trouville, Le Port*

signed, dated and titled 'E. Boudin. Trouville 80' (lower right)  
oil on canvas  
16¾ x 22¼ in. (41 x 56.7 cm.)  
Painted in 1880

\$70,000-100,000

PROPERTY FROM A TEXAS ESTATE

788

**EUGENE BOUDIN (1824-1898)**

*Trouville, Les jetées, marée haute*

signed and dated 'E. Boudin 96' (lower left)  
oil on panel  
12¾ x 16¾ in. (32 x 41 cm.)  
Painted in 1896

\$50,000-70,000



PROPERTY FROM THE ORANGE BLOSSOM COLLECTION

789

**ALBERT LÉBOURG (1849-1928)**

*Le port de La Rochelle*

signed and inscribed 'A Lebourg La Rochelle' (lower right)  
oil on canvas  
25¾ x 31¾ in. (65.2 x 81 cm.)  
Painted in 1905

\$15,000-20,000



PROPERTY FROM A PARK AVENUE COLLECTION

790

**PIERRE BONNARD (1867-1947)**

*Marine, Cannes*

signed 'Bonnard' (lower left)  
oil on canvas  
16¼ x 17 in. (41.2 x 43.2 cm.)  
Painted in 1923

\$80,000-120,000







PROPERTY OF A GENTLEMAN

791

**ARMAND GUILLAUMIN (1841-1927)**

*Agay*

signed 'Guillaumin' (lower left); titled and dated 'Agay 1899' (on the reverse)  
oil on canvas  
25½ x 31¾ in. (65 x 80.7 cm.)  
Painted in 1899

\$80,000-120,000



PROPERTY FROM A DISTINGUISHED COLLECTION

792

**ALFRED SISLEY (1839-1899)**

*La Seine à Saint-Mammès, le soir*

signed and dated 'Sisley. 85' (lower right)  
oil on canvas  
15 x 22 in. (37.9 x 55.7 cm.)  
Painted in 1885

\$500,000-700,000



793

**HENRI MARTIN (1860-1943)**

*Le pont, temps gris*

signed 'Henri Martin.' (lower left)  
oil on canvas  
29½ x 36¼ in. (75 x 92 cm.)  
Painted circa 1920-1925

\$50,000-70,000

PROPERTY FROM THE PHOENIX GROUP COLLECTION

794

**REUVEN RUBIN (1893-1974)**

*Olive Trees in the Galilee*

signed 'Rubin' (lower right)  
oil on canvas  
25½ x 19½ in. (65 x 49.6 cm.)  
Painted in 1924

\$150,000-200,000



PROPERTY FROM A DISTINGUISHED PRIVATE COLLECTOR

795

**MARC CHAGALL (1887-1985)**

*Scène paysanne*

signed 'Marc Chagall' (lower right); signed again 'Marc Chagall' (on the reverse)  
oil, gouache and brush and India ink on canvas  
36 x 28¾ in. (91.8 x 72.6 cm.)  
Painted in 1974

\$1,000,000-1,500,000



PROPERTY FROM A PRIVATE COLLECTION, SWITZERLAND

796

**CHAIM SOUTINE (1893-1943)**

*Poulet sur fond bleu*

signed 'Soutine' (lower right)  
oil on canvas  
33 x 16¼ in. (84 x 41 cm.)  
Painted circa 1924-1925

\$200,000-300,000





PROPERTY FROM THE PHOENIX GROUP COLLECTION

797

**MORDECAI ARDON (1896-1992)**

*View of the Wall*

signed 'Ardon' (lower right)  
oil on canvas  
37¾ x 50½ in. (97 x 128.7 cm.)  
Painted circa 1970

\$120,000-180,000



SOLD BY ORDER OF THE BOARD OF TRUSTEES OF THE MINNEAPOLIS INSTITUTE OF ART, TO BENEFIT THE ACQUISITIONS FUND

798

**REUVEN RUBIN (1893-1974)**

*Rider with Bouquet*

signed 'Rubin' and signed again in Hebrew (lower left); signed again, dated, titled and inscribed 'RUBIN. Rider with Bouquet. 1968 MADE IN ISRAEL' (on the stretcher)  
oil on canvas  
13¾ x 10¾ in. (35 x 27 cm.)  
Painted in 1968

\$25,000-35,000



799

**MARINO MARINI (1901-1980)**

*Cavallo*

with raised initials 'M.M.' (on the top of the base)  
bronze with brown and black patina  
Height: 28⅞ in. (73 cm.)  
Conceived in 1942

\$200,000-300,000



800

**BALTHUS (1908-2001)**

*Le panier de cerises*

signed and dated 'Balthus. 1961.' (on the reverse)  
oil and Casein on canvas  
25⅝ x 36¼ in. (65 x 92 cm.)  
Painted in 1956-1961

\$200,000-300,000



PROPERTY FROM A PRIVATE TEXAS COLLECTION

801

**TAMARA DE LEMPICKA (1898-1980)**

*Femme de profil vêtue d'un châle*

stamped with signature 'T DE LEMPICKA' (lower left)  
oil on canvas  
24 x 18 in. (60.8 x 45.9 cm.)  
Painted circa 1922

\$250,000-350,000

802 NO LOT



PROPERTY FROM THE COLIN FAMILY COLLECTION

803

**ALEXEJ VON JAWLENSKY (1864-1941)**

*Variation*

signed with initials 'A.J.' (lower left)  
oil on linen-finish paper laid down on board  
13¾ x 10¾ in. (35 x 27.2 cm.)  
Painted circa 1915

\$120,000-180,000



PROPERTY FROM THE COLIN FAMILY COLLECTION

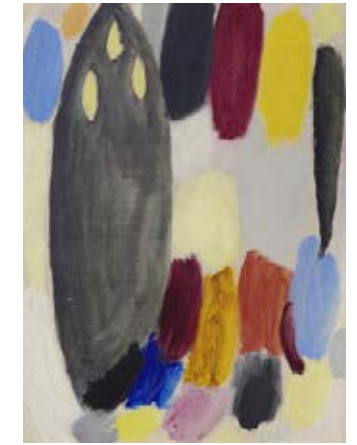
804

**LYONEL FEININGER (1871-1956)**

*The Hidden Village*

signed 'Feininger' (lower left); signed again, dated and titled 'L. Feininger 1948 The Hidden Village' (on the stretcher)  
oil on canvas  
20 x 24 in. (50.8 x 61 cm.)  
Painted in 1948

\$120,000-180,000



807

**ALEXEJ VON JAWLENSKY (1864-1941)**

*Variation: Erleuchtung (Triptychon)*

signed with initials 'A.J.' (lower left)  
oil on linen-finish paper laid down on board  
Image size: 14¼ x 10⅞ in. (36.3 x 27 cm.)  
Executed in Ascona in 1919

\$80,000-120,000



PROPERTY FROM THE ORANGE BLOSSOM COLLECTION

805

**MAX PECHSTEIN (1881-1955)**

*Akt III, sitzend von vorne (Marta)*

signed with monogram and dated '32' (lower right)  
gouache, tempera and watercolor on paper laid down on canvas  
27⅞ x 21⅞ in. (70.7 x 54.3 cm.)  
Painted in 1932

\$30,000-50,000

PROPERTY FROM A PRIVATE CHICAGO COLLECTION

808

**JEAN (HANS) ARP (1887-1966)**

*Grand bâtard*

signed with monogram and numbered '1/5' (on the underside)  
polished bronze  
Height: 17¾ in. (45 cm.)  
Conceived in 1960 and cast in October 1962

\$80,000-120,000



PROPERTY FROM A PRIVATE COLLECTION, SWITZERLAND

806

**ERNST LUDWIG KIRCHNER (1880-1938)**

*Aus dem Wald schreitender Akt*

signed 'ELKirchner' (lower right); signed again twice and titled 'ELKirchner Aus dem Wald schreitender Akt E.L.Kirchner.' (on the reverse)  
oil on canvas  
49⅞ x 35½ in. (125.5 x 90.1 cm.)  
Painted in 1913-1920

\$800,000-1,200,000

809

**MAX ERNST (1891-1976)**

*Landscape with Double Portrait*

signed 'max ernst' (lower right)  
oil on canvas  
8¾ x 9⅞ in. (22.2 x 25 cm.)  
Painted circa 1952

\$120,000-180,000



SURREALIST DREAM  
THE SHIRLEY ANN AND FRANK WOZENCRAFT COLLECTION



Δ810  
**SALVADOR DALI (1904-1989)**  
*FOLDING SCREEN*  
painted canvas and tinted fir  
each panel: 106¼ x 28¼ in. (270 x 71.5 cm)  
indistinctly inscribed  
Painted *circa* 1955-1957  
\$60,000-80,000

PROPERTY FROM THE ORANGE BLOSSOM COLLECTION

813  
**GIORGIO DE CHIRICO (1888-1978)**  
*Cavallo bruno*  
signed 'G. de Chirico' (upper right)  
oil on board  
6⅞ x 11⅞ in. (17.3 x 29 cm.)  
Painted *circa* 1955  
\$25,000-35,000



811  
**SALVADOR DALI (1904-1989)**  
*Grande Vénus de Milo aux tiroirs*  
signed 'Salvador Dali' (on the top of the base); numbered and stamped  
with foundry mark '6/8 C. VALSUANI CIRE PERDUE PARIS'  
(on the side of the base)  
bronze with green and brown patina  
Height: 85½ in. (217.5 cm.)  
Conceived in 1964 and cast in 1988  
\$150,000-250,000

814  
**MARINO MARINI (1901-1980)**  
*Piccolo cavaliere*  
with raised initials and numbered 'MM 2/6' (on the top of the base)  
bronze with brown patina  
Height: 15½ in. (39.3 cm.)  
Length: 13¾ in. (35 cm.)  
Conceived in 1944  
\$80,000-120,000



PROPERTY FROM A MEMBER OF THE MATISSE FAMILY  
812  
**JOAN MIRO (1893-1983)**  
*Danseuse*  
signed, numbered and inscribed with foundry mark 'Miró 3/6 Parellada'  
(on the back of the base)  
bronze  
Height: 40 in. (101.6 cm.)  
Conceived in 1981  
\$120,000-180,000

815  
**HENRY MOORE (1898-1986)**  
*Slow Form: Tortoise*  
signed and numbered 'Moore 7/9' (on the back)  
bronze with brown patina  
Length: 7½ in. (19 cm.)  
Conceived in 1962  
\$18,000-25,000





PROPERTY FROM AN EXCEPTIONAL PRIVATE COLLECTION

816

**MAX ERNST (1891-1976)**

*Fleur-coquille*

signed 'max ernst' (lower right)  
oil on canvas  
18 x 14<sup>7</sup>/<sub>8</sub> in. (45.6 x 37.7 cm.)  
Painted in 1928

\$180,000-250,000



PROPERTY FROM THE FOUNDATION MIREILLE AND JAMES LÉVY

817

**JEAN (HANS) ARP (1895-1965)**

*Gueule de fleur*

white marble  
Height: 20 in. (50.8 cm.)  
Executed in 1960; unique

\$100,000-150,000



PROPERTY FROM A DISTINGUISHED PRIVATE COLLECTION

818

**ALEXANDER ARCHIPENKO (1887-1964)**

*Madonna*

signed 'ARCHIPENKO' (on the back)  
white marble  
Height: 24<sup>3</sup>/<sub>4</sub> in. (62.8 cm.)  
Executed circa 1936

\$40,000-60,000



PROPERTY FROM A PARK AVENUE COLLECTION

819

**PABLO PICASSO (1881-1973)**

*Les Buveurs*

dated '10.2.57.11.1.57' (upper right); signed thrice 'Picasso' (on the sides)  
white earthenware ceramic plaque with colored engobe and glaze  
12 x 10 in. (30.5 x 25.5 cm.)  
Executed in 1957; unique

\$100,000-150,000



820

**ALFRED SISLEY (1839-1899)**

*Pommiers en fleurs*

signed and dated 'Sisley. 90' (lower right)  
oil on canvas  
14<sup>7</sup>/<sub>8</sub> x 21<sup>5</sup>/<sub>8</sub> in. (38 x 55 cm.)  
Painted in 1890

\$350,000-550,000



821

**GUSTAVE LOISEAU (1865-1935)**

*Paysage*

signed and dated 'G. Loiseau 1907' (lower left)  
oil on canvas  
21<sup>1</sup>/<sub>4</sub> x 28<sup>5</sup>/<sub>8</sub> in. (54.2 x 73.7 cm.)  
Painted in 1907

\$100,000-150,000



PROPERTY OF A GENTLEMAN

822

**LOUIS VALTAT (1869-1952)**

*Jardin de Choisel*

stamped with initials 'L.V.' (Lugt 1771bis; lower right)  
oil on canvas  
10 $\frac{3}{8}$  x 13 $\frac{3}{4}$  in. (26.8 x 34.9 cm.)  
Painted *circa* 1930

\$20,000-30,000



823

**PIERRE-AUGUSTE RENOIR (1841-1919)**

*Deux femmes dans le jardin de Cagnes*

stamped with signature 'Renoir.' (Lugt 2137b; lower left)  
oil on canvas  
21 $\frac{3}{8}$  x 25 $\frac{1}{2}$  in. (54.9 x 64.8 cm.)  
Painted in 1918

\$1,000,000-1,500,000



PROPERTY FROM A PARK AVENUE COLLECTION

824

**EDOUARD VUILLARD (1868-1940)**

*Fenêtre ouverte sur la nuit*

stamped with signature 'E. Vuillard' (Lugt 2497a; lower right)  
oil on canvas  
19 $\frac{3}{4}$  x 14 $\frac{7}{8}$  in. (50 x 38.2 cm.)  
Painted *circa* 1930

\$80,000-120,000

PROPERTY FROM A NEW YORK COLLECTION

825

**CAMILLE PISSARRO (1830-1903)**

*La Charité*

signed and dated 'C. Pissarro. 1876' (lower right)  
oil on canvas  
22 $\frac{1}{4}$  x 18 $\frac{1}{8}$  in. (56.3 x 46 cm.)  
Painted in 1876

\$250,000-350,000



PROPERTY FROM A PRIVATE AMERICAN COLLECTION

826

**EDOUARD VUILLARD (1868-1940)**

*Aux Pavillons à Cricqueboeuf, Le Parc*

*peinture à la colle* on canvas  
83 $\frac{1}{2}$  x 31 in. (211.8 x 79 cm.)  
Painted in 1911 and reworked by the artist in 1934

\$200,000-300,000



PROPERTY OF AN AMERICAN ESTATE

827

**MAURICE DE VLAMINCK (1876-1958)**

*Le Viaduc de Saint-Germain*

signed 'Vlaminck' (lower left)  
oil on canvas  
26 x 32 $\frac{3}{8}$  in. (66 x 82.2 cm.)  
Painted in 1908-1910

\$180,000-250,000





PROPERTY FROM A PARK AVENUE COLLECTION

828

**PIET MONDRIAN (1872-1944)**

*Gebogen irrigatiegracht grenzend aan boerenerf met Bloeiende bomen (Curved Irrigation Ditch Bordering Farmyard with Flowering Trees)*

signed 'PIET MONDRIAN' (lower left)  
oil on canvas  
19½ x 27 in. (50.1 x 68.7 cm.)  
Painted *circa* 1902

\$150,000-250,000



PROPERTY FROM A PARK AVENUE COLLECTION

829

**ODILON REDON (1840-1916)**

*Rue à Fontarabie*

signed 'ODILON REDON' (lower right)  
oil on canvas  
20½ x 18½ in. (52.3 x 46.2 cm.)

\$50,000-70,000



830

**RAOUL DUFY (1877-1953)**

*Le bassin à Deauville*

signed and dated 'Raoul Dufy 1929' (lower left)  
oil on canvas  
18 x 21½ in. (45.9 x 57.8 cm.)  
Painted in 1929

\$200,000-300,000



PROPERTY FROM A PRIVATE NEW YORK COLLECTION

831

**MAURICE DE VLAMINCK (1876-1958)**

*Paysage à Mériel*

signed 'Vlaminck' (lower left)  
oil on canvas  
32 x 39½ in. (81.5 x 100.2 cm.)  
Painted *circa* 1911-1913

\$50,000-70,000



PROPERTY FROM THE ESTATE OF WILLIAM M. GRAVES

832

**ANDRE HAMBOURG (1908-1999)**

*A Deauville en août, Temps couvert*

signed 'a. Hambourg' (lower left); signed again with initials and titled 'a.h. "à Deauville, en août, Temps couvert"' (on the reverse)  
oil on canvas  
31¾ x 39¼ in. (79.8 x 100 cm.)  
Painted *circa* 1978

\$15,000-20,000



PROPERTY OF A GENTLEMAN

833

**ALBERT LEBOURG (1849-1928)**

*La Seine à Rouen, Soleil couchant*

signed 'a. Lebourg.' (lower right); titled 'La Seine à Rouen' (on the stretcher)  
oil on canvas  
18¼ x 28¾ in. (46.4 x 72.9 cm.)  
Painted *circa* 1910

\$20,000-30,000



834  
**GUSTAVE LOISEAU (1865-1935)**  
*Dieppe*  
signed 'G Loiseau' (lower right)  
oil on canvas  
21 x 25½ in. (53.7 x 65 cm.)  
Painted in 1929  
\$40,000-60,000



835  
**PIERRE-AUGUSTE RENOIR (1841-1919)**  
*La chapelle à Cagnes*  
stamped with signature 'Renoir.' (Lugt 2137b; lower left)  
oil on canvas  
8½ x 12¾ in. (21.1 x 32.3 cm.)  
Painted in 1899  
\$120,000-180,000



PROPERTY FROM THE COLIN FAMILY COLLECTION  
836  
**GEORGES ROUAULT (1871-1958)**  
*Mille et Une Nuits*  
signed 'G. Rouault' (lower right)  
oil on paper laid down on canvas  
10¾ x 15¾ in. (26.5 x 40 cm.)  
Painted in 1939  
\$15,000-20,000



837  
**JEAN DUFY (1888-1964)**  
*Les Moissonneurs*  
signed and dated 'Jean Dufy 25' (lower right)  
oil on canvas  
21¼ x 28¾ in. (54 x 72.7 cm.)  
Painted in 1925  
\$20,000-30,000



838  
**CAMILLE BOMBOIS (1883-1970)**  
*Le leveur de poids*  
signed 'Bombois. C.Ile' (lower left)  
oil on canvas  
23½ x 31¾ in. (59.8 x 80 cm.)  
\$30,000-50,000



839  
**ANDRE BRASILIER (B. 1929)**  
*Vincennes sous la neige*  
signed 'André Brasilier.' (lower center); signed again with initials  
and titled 'Vincennes sous la neige A.B.' (on the reverse)  
oil over pencil on canvas  
28½ x 45½ in. (72.7 x 116 cm.)  
Painted in 1986  
\$30,000-50,000





PROPERTY OF A PRESTIGIOUS PRIVATE COLLECTOR

840

**LOUIS VALTAT (1869-1952)**

*Jeux d'enfants*

signed 'L. Valtat' (lower right)  
oil on canvas  
28 $\frac{3}{8}$  x 36 $\frac{1}{4}$  in. (72.6 x 92 cm.)  
Painted in 1898

\$50,000-70,000



841

**PIERRE BONNARD (1867-1947)**

*Femme pensif au corsage bleu*

stamped with signature 'Bonnard' (Lugt 3886; lower left)  
oil on canvas  
21 $\frac{7}{8}$  x 18 $\frac{3}{8}$  in. (55.5 x 46.7 cm.)  
Painted circa 1916

\$80,000-120,000



PROPERTY FROM A PRIVATE FLORIDA COLLECTION

842

**MOÏSE KISLING (1891-1953)**

*Femme à l'écharpe bleue*

signed 'Kisling' (upper right)  
oil on canvas  
39 $\frac{1}{4}$  x 28 $\frac{3}{4}$  in. (100 x 72.6 cm.)  
Painted in 1928

\$30,000-50,000



843

**LOUIS VALTAT (1869-1952)**

*La couture*

oil on canvas  
23 $\frac{1}{2}$  x 28 $\frac{3}{8}$  in. (59.6 x 72.6 cm.)  
Painted circa 1902-1903

\$40,000-60,000



844

**HENRI MANGUIN (1874-1949)**

*Geneviève Sauty nue lisant*

signed 'manguin' (lower right)  
oil on canvas  
18 x 15 in. (46 x 38 cm.)  
Painted in 1945

\$18,000-25,000



845

**BERNARD BUFFET (1928-1999)**

*Bouquet aux tulipes oranges*

signed and dated '1971 Bernard Buffet' (lower right)  
oil on masonite  
31 $\frac{7}{8}$  x 25 $\frac{3}{8}$  in. (80.9 x 65.1 cm.)  
Painted in 1971

\$50,000-70,000



846  
**MAURICE DE VLAMINCK (1876-1958)**  
*Vase de fleurs*  
signed 'Vlaminck' (lower left)  
oil on canvas  
18 x 15 in. (47.7 x 37.7 cm.)  
Painted circa 1945  
\$40,000-60,000



PROPERTY FROM A PARK AVENUE COLLECTION  
847  
**GEORGES ROUAULT (1871-1958)**  
*Nature morte aux pommes*  
signed and dated 'G. Rouault 1932' (lower left)  
oil on paper laid down on canvas  
16 x 13¾ in. (40.9 x 35 cm.)  
Painted in 1932  
\$20,000-30,000



848  
**LOUIS VALTAT (1869-1952)**  
*Dahlias à la cruche en verre devant une tenture rouge*  
signed 'L. Valtat' (lower right)  
oil on canvas  
32 x 25¼ in. (81.1 x 65 cm.)  
Painted circa 1910  
\$60,000-80,000

PROPERTY FROM THE COLLECTION OF DR. CORINNE BRONFMAN

849  
**ANDRE DERAIN (1880-1954)**  
*Nature morte*  
signed 'a. Derain' (lower right)  
oil on canvas  
14⅞ x 21⅞ in. (37.8 x 54.5 cm.)  
Painted in 1925-1928  
\$8,000-12,000



850  
**BERNARD BUFFET (1928-1999)**  
*Nature morte à la bouteille cassée*  
signed and dated 'Bernard Buffet 50' (upper right)  
oil and pencil on canvas  
13 x 21⅞ in. (33 x 55 cm.)  
Painted in 1950  
\$30,000-50,000



851  
**MAURICE UTRILLO (1883-1955)**  
*Rue Norvins à Montmartre*  
signed 'Maurice, Utrillo, V.' (lower right)  
oil on board  
24¼ x 18½ in. (61.5 x 46.6 cm.)  
Painted circa 1919  
\$18,000-25,000





852  
**PIERRE-AUGUSTE RENOIR (1841-1919)**  
*Paysage près de la mer*  
stamped with signature 'Renoir.' (Lugt 2137b; lower right)  
oil on canvas  
6 $\frac{3}{8}$  x 10 $\frac{1}{2}$  in. (16 x 26.6 cm.)  
Painted in 1895  
\$50,000-70,000



853  
**ANDRE BRASILIER (B. 1929)**  
*Ciel de feu*  
signed 'André Brasilier.' (upper right); signed again, titled and dated  
'Ciel de feu. André Brasilier 2017' (on the stretcher)  
oil on canvas  
57 $\frac{3}{8}$  x 35 in. (145.3 x 89 cm.)  
Painted in 2017  
\$40,000-60,000



854  
**ARMAND GUILLAUMIN (1841-1927)**  
*La vallée de la Creuse et le Puy Barriou*  
signed 'Guillaumin' (lower right)  
oil on canvas  
25 $\frac{1}{2}$  x 31 $\frac{7}{8}$  in. (65 x 81 cm.)  
Painted circa 1922  
\$40,000-60,000

855  
**MAURICE UTRILLO (1883-1955)**  
*Rue à Montmartre*  
signed 'Maurice, Utrillo, V.' (lower left)  
oil on paper laid down on canvas  
21 $\frac{1}{4}$  x 26 $\frac{3}{8}$  in. (53.8 x 66.2 cm.)  
Painted circa 1923  
\$40,000-60,000





# Picasso Ceramics

ONLINE | SELECTED HIGHLIGHTS

## ONLINE AUCTION

6-20 May 2024

## VIEWING

Saturday 4 May - Saturday 18 May  
Monday - Saturday 10.00am - 5.00pm  
Sunday 1.00pm - 5.00pm

## CONTACT

Emmanuelle Loumet  
Head of Sale  
eloumet@christies.com  
+1 212 636 2226

Tory Mileti  
Sale Coordinator  
tmileti@christies.com  
+1 212 707 5924

## GENERAL ENQUIRIES

+1 212 707 5924

## AUCTION NUMBER

22655



Browse and bid online

CHRISTIE'S



**PABLO PICASSO (1881-1973)**

*Cavalier et cheval (A.R. 137)*

stamped, marked and numbered 'Edition Picasso/Madoura Plein Feu/  
Edition Picasso/Madoura/210/300' (underneath)  
white earthenware ceramic pitcher, partially engraved, with colored  
engobe and glaze  
Height: 8¾ in. (21.9 cm.)  
Conceived in 1952 and executed in a numbered edition of 300

\$7,000-10,000



**PABLO PICASSO (1881-1973)**

*Vase deux anses hautes (A.R. 141)*

stamped and marked 'Edition Picasso/Madoura Plein Feu/Edition  
Picasso' (underneath)  
white earthenware ceramic vase, partially engraved, with colored engobe  
and glaze  
Height: 15¼ in. (38.7 cm.)  
Conceived in 1952 and executed in an edition of 400

\$25,000-35,000



**PABLO PICASSO (1881-1973)**

*Vase aux chèvres (A.R. 157)*

dated '6.6.52.' (on the right side); stamped 'D'Après Picasso/Madoura  
Plein Feu/Empreinte Originale de Picasso' (underneath)  
white earthenware ceramic vase, partially engraved with colored engobe  
and glaze  
Height: 7¾ in. (18.7 cm.)  
Conceived on 6 June 1952 and executed in a small edition

\$15,000-20,000



**PABLO PICASSO (1881-1973)**

*Hibou mat (A.R. 284)*

stamped and marked 'Edition Picasso/Madoura Plein Feu/Edition  
Picasso/Madoura' (underneath)  
white earthenware ceramic plate, partially engraved, with colored engobe  
and glaze  
Length: 15¾ in. (39.1 cm.)  
Conceived in 1955 and executed in an edition of 450

\$8,000-12,000



**PABLO PICASSO (1881-1973)**

*Hibou (A.R. 224)*

marked 'Madoura/Edition Picasso' (underneath)  
white earthenware ceramic sculpture, partially engraved, with colored  
engobe  
Height: 12 in. (30.5 cm.)  
Conceived in 1953 and executed in an edition of 25

\$60,000-80,000



**PABLO PICASSO (1881-1973)**

*Quatre profils enlacés (A.R. 87)*

stamped 'Madoura Plein Feu/Empreinte Originale de Picasso' (underneath)  
white earthenware ceramic plate with colored engobe and glaze  
Diameter: 10½ in. (26.9 cm.)  
Conceived in 1949 and executed in an edition of 25

\$10,000-15,000



**PABLO PICASSO (1881-1973)**

*Visage au nez noir (A.R. 609)*

dated '9.1.69.' (on the side); stamped, marked and numbered 'Edition Picasso/Madoura Plein Feu/Edition Picasso/Madoura/22/200' (underneath)  
white earthenware ceramic pitcher, partially engraved, with colored engobe and glaze  
Height: 13 in. (33 cm.)  
Conceived on 9 January 1969 and executed in a numbered edition of 200

\$30,000-50,000



**PABLO PICASSO (1881-1973)**

*Pichet espagnol (A.R. 244)*

stamped, marked and numbered 'Edition Picasso/Madoura Plein Feu/Edition Picasso/Madoura/196/300' (underneath)  
white earthenware ceramic vessel, partially engraved, with colored engobe and glaze  
Height: 8¾ in. (22.7 cm.)  
Conceived in 1954 and executed in a numbered edition of 300

\$8,000-12,000



**PABLO PICASSO (1881-1973)**

*Femme du barbu (A.R. 193)*

stamped and marked 'Edition Picasso/Madoura Plein Feu/Edition Picasso' (underneath)  
white earthenware ceramic pitcher, partially engraved, with colored engobe and glaze  
Height: 15½ in. (38.2 cm.)  
Conceived on 10 July 1953 and executed in an edition of 500

\$20,000-30,000



**PABLO PICASSO (1881-1973)**

*Gros oiseau corrida (A.R. 191)*

stamped and numbered 'Madoura Plein Feu/Edition Picasso/3' (inside the neck of the vase)  
white earthenware ceramic vase with colored engobe and glaze  
Height: 21¾ in. (55.4 cm.)  
Conceived on 22 June 1953 and executed in a numbered edition of 25

\$80,000-120,000



**PABLO PICASSO (1881-1973)**

*Taureau gravé (A.R. 32)*

stamped, marked and numbered 'Madoura Plein Feu/Edition Picasso/1107/84/200' (underneath)  
white earthenware ceramic plate, partially engraved, with colored engobe and glaze  
Length: 15¼ in. (38.7 cm.)  
Conceived in 1947 and executed in a numbered edition of 200

\$8,000-12,000



**PABLO PICASSO (1881-1973)**

*Chouette (A.R. 602)*

stamped, marked and numbered 'Edition Picasso/Madoura Plein Feu/Edition Picasso/Madoura/R142/331/350' (underneath)  
white earthenware ceramic vase, partially engraved, with colored engobe and glaze  
Height: 12⅞ in. (30.8 cm.)  
Conceived in 1969 and executed in a numbered edition of 350

\$18,000-25,000



**PABLO PICASSO (1881-1973)**

*Hibou rouge sur fond noir (A.R. 399)*

stamped, marked and numbered 'Madoura Plein Feu/Edition Picasso/Madoura/Edition Picasso/N103/85/150' (underneath)  
terracotta platter, partially engraved, with colored engobe and glaze  
Diameter: 17⅞ in. (43.5 cm.)  
Conceived on 10 May 1957 and executed in a numbered edition of 150

\$10,000-15,000



**PABLO PICASSO (1881-1973)**

*Tête de femme couronnée de fleurs (A.R. 237)*

dated '20.3.54.' (on the right side); marked and numbered 'Edition Picasso/Madoura/R-157/42/100' (underneath)  
white earthenware ceramic vase, partially engraved, with colored engobe and glaze  
Height: 9 in. (22.8 cm.)  
Conceived on 20 March 1954 and executed in a numbered edition of 100

\$18,000-25,000



**PABLO PICASSO (1881-1973)**

*Visage aux yeux ricurs (A.R. 608)*

stamped, marked and numbered 'Edition Picasso/Madoura Plein Feu/Edition Picasso/Madoura/R137/309/350' (underneath)  
white earthenware ceramic pitcher, partially engraved, with colored engobe and glaze  
Height: 13¼ in. (33.3 cm.)  
Conceived on 9 January 1969 and executed in a numbered edition of 350

\$30,000-50,000



**PABLO PICASSO (1881-1973)**

*Tête au masque (A.R. 362)*

stamped, marked and numbered 'Madoura Plein Feu/Empreinte Originale de Picasso/F.200/88/200' (underneath)  
white earthenware ceramic plate with black engobe and glaze  
Diameter: 12¼ in. (31.1 cm.)  
Conceived in 1956 and executed in a numbered edition of 200

\$10,000-15,000



**PABLO PICASSO (1881-1973)**

*Pichet gravé gris (A.R. 246)*

stamped and marked 'Edition Picasso/Madoura Plein Feu/Edition Picasso' (underneath)  
white earthenware ceramic pitcher, partially engraved, with colored engobe and glaze  
Height: 12 in. (30.5 cm.)  
Conceived in 1954 and executed in an edition of 500

\$10,000-15,000



**PABLO PICASSO (1881-1973)**

*Pichet anse prise (A.R. 186)*

stamped, marked, and numbered 'Edition Picasso/Madoura Plein Feu/Edition Picasso/Madoura/141/200' (underneath)  
white earthenware ceramic pitcher with colored engobe and glaze  
Height: 8¼ in. (20.6 cm.)  
Conceived on 4 April 1953 and executed in a numbered edition of 200

\$4,000-6,000



**PABLO PICASSO (1881-1973)**

*Visage dans un ovale (A.R. 274)*

stamped, marked and numbered 'Madoura Plein Feu/Empreinte Originale de Picasso/I 115/17/100' (underneath)  
white earthenware ceramic plate, partially engraved, with colored engobe and glaze  
Length: 15½ in. (40 cm.)  
Conceived on 8 April 1955 and executed in a numbered edition of 100

\$8,000-12,000



**PABLO PICASSO (1881-1973)**

*Jacqueline au chevalet (A.R. 333)*

stamped and numbered 'Madoura Plein Feu/Empreinte Originale de Picasso/79/200' (underneath)  
white earthenware ceramic plate with colored engobe and glaze  
Diameter: 16½ in. (41.9 cm.)  
Conceived in 1956 and executed in a numbered edition of 200

\$20,000-30,000





**PABLO PICASSO (1881-1973)**

*Pichet à glace (A.R. 142)*

stamped, marked and numbered 'Edition Picasso/Madoura Plein Feu/  
Edition Picasso/Madoura/4/100' (underneath)  
white earthenware ceramic vessel, partially engraved, with colored engobe  
and glaze  
Height: 12 $\frac{3}{4}$  in. (32 cm.)  
Conceived in 1952 and executed in a numbered edition of 100

\$20,000-30,000



**PABLO PICASSO (1881- 1973)**

*Poisson fond blanc (A.R. 168)*

stamped, marked, and numbered 'Madoura Plein Feu/Empreinte Originale  
de Picasso/1.114/126/200' (underneath)  
white earthenware ceramic plate with colored engobe and glaze  
Length: 16 $\frac{1}{2}$  in. (42 cm.)  
Conceived in 1952 and executed in a numbered edition of 200

\$8,000-12,000



PROPERTY FROM A DISTINGUISHED PALM BEACH COLLECTION

**PABLO PICASSO (1881-1973)**

*Bouteille gravée (A.R. 249)*

marked and numbered 'Edition Picasso/Madoura/34/300' (underneath)  
white earthenware ceramic vase, partially engraved, with black oxide,  
black engobe and white glaze  
Height: 17 in. (43.2 cm.)  
Conceived in 1954 and executed in a numbered edition of 300

\$12,000-18,000



**PABLO PICASSO (1881-1973)**

*Visage no. 111 (A.R. 476)*

marked and numbered 'Edition Picasso/Madoura/N°111/422/500'  
(underneath)  
white earthenware ceramic plate with colored engobe and glaze  
Diameter: 10 in. (25.4 cm.)  
Conceived in 1963 and executed in a numbered edition of 500

\$6,000-8,000



**PABLO PICASSO (1881-1973)**

*Vase aztèque aux quatre visages (A.R. 402)*

stamped, marked and numbered 'Edition Picasso/Madoura Plein Feu/  
Edition Picasso/Madoura/3/100' (underneath)  
white earthenware ceramic vessel, partially engraved, with colored engobe  
and glaze  
Height: 21 $\frac{1}{8}$  in. (55.6 cm.)  
Conceived in 1957 and executed in a numbered edition of 100

\$60,000-80,000

CHRISTIE'S



## Post-War and Contemporary Art Day Sale

New York | 17 May 2024

VIEWING  
May 2024  
20 Rockefeller Plaza  
New York, NY 10020

Allison Immergut  
aimmergut@christies.com  
+1 212 636 2106

Michael Baptist  
mbaptist@christies.com  
+1 212 636 2660

THE COLLECTION OF Norman & Lyn Lear

JOAN MIRO (1893-1983)  
*Projet pour un monument*  
painted bronze  
52 × 10½ × 6 in. (132.1 × 25.6 × 15.2 cm.)  
Executed in 1973  
\$400,000-600,000

christies.com

CHRISTIE'S



## INVITATION TO CONSIGN Avant-Garde(s) including Thinking Italian

Paris | October 2024

Valérie Didier  
vdidier@christies.com  
+33 (1) 40 76 84 32

PROPERTY FROM A PRIVATE COLLECTION, FRANCE  
TOYEN (MARIE ČERMÍNOVÁ;  
1902-1980)

*Tu t'évapores dans un buisson de cris*  
oil on canvas  
48 × 33.7/8 in. (122 × 86 cm.)  
Painted in 1956  
Estimate: €700,000-1,000,000  
Price realized : €2,823,000

christies.com

## INDEX

### A

Angrand, C. 538  
Archipenko, A. 818  
Ardon, M. 797  
Arp, J. (Hans) 503, 703,  
706, 808, 817

### B

Balthus, 800  
Bombois, C. 838  
Bonnard, P. 790, 841  
Boudin, E. 722, 723,  
787, 788  
Brancusi, C. 527  
Braque, H. 729, 744  
Brasillier, A. 839, 853  
Buffet, B. 590, 593, 600,  
751, 760, 765, 600,  
845, 850  
Burluik, D. 750

### C

Camoin, C. 752  
Canu, Y. 714  
Cassigneul, J.-P. 758  
Cézanne, P. 717  
Chagall, M. 504, 520, 521,  
534, 542, 545, 556,  
589, 728, 748, 795

### D

Dalí, S. 502, 507, 509,  
510, 512, 516, 704,  
810, 811  
Daumier, H. 554, 586,  
587, 781  
de Chirico, G. 705, 813  
Degas, E. 552, 583, 584,  
708, 727, 782  
Delaunay, R. 570  
Delaunay, S. 524, 576,  
577  
Delvaux, P. 506  
Denis, M. 769  
Derain, A. 540, 541, 849  
Dix, O. 558  
Dufy, J. 548, 549, 591,  
592, 837  
Dufy, R. 546, 595, 598,  
830

### E

Ernst, M. 701, 809, 816

### F

Fantini-Latour, H. 718  
Feininger, L. 562, 563,  
804  
Fini, L. 707  
Forain, J.L. 551  
Foujita, L.-T. 513  
Frieseke, F.C. 777

### G

Gauguin, P. 535, 536  
Gestel, L. 559  
Giacometti, A. 580  
Giacometti, D. 731  
Gleizes, A. 567, 569,  
742, 747  
González, J. 733  
Gris, J. 568  
Grosz, G. 560  
Guillaumin, A. 550, 585,  
784, 791, 854

### H

Hambourg, A. 832  
Herbin, A. 721, 739, 743

### J

Jawlensky, A. 803, 807

### K

Kandinsky, W. 565  
Kirchner, E. L. 806  
Kisling, M. 842  
Klee, P. 561, 564  
Klimt, G. 529  
Kokoschka, O. 530  
Kupka, F. 575

### L

Laurencin, M. 588, 757  
Laurens, H. 526, 734  
Le Sidaner, H. 713  
Lebasque, H. 778  
Lebourg, A. 789, 833  
Léger, F. 566, 573, 574,  
735  
Lempicka, T. de 801  
Lipchitz, J. 738  
Lobo, B. 754  
Loiseau, G. 710, 763,  
821, 834  
Luce, M. 709, 711, 720,  
762, 785

### M

Magritte, R. 505, 511  
Maillol, A. 602  
Man Ray 702  
Manguin, H. 844  
Manzú, G. 745  
Marini, M. 766, 799, 814  
Marquet, A. 761  
Martin, H. 793  
Masson, A. 557  
Matisse, H. 522, 528, 531,  
555, 581, 596, 597, 716  
Metzinger, J. 572, 741  
Miró, J. 501, 508, 578,  
812  
Mondrian, P. 783, 828  
Monet, C. 726  
Moore, H. 601, 755,  
756, 815  
Morandi, G. 730  
Morisot, B. 582

### P

Pechstein, M. 805  
Picabia, F. 712  
Picasso, P. 514, 515, 523,  
532, 533, 571, 579,  
732, 819  
Pissarro, C. 779, 825  
Prendergast, M. 775, 776

### R

Redon, O. 537, 539, 724,  
768, 772, 829  
Renoir, P.-A. 715, 773,  
780, 823, 835, 852  
Rodin, A. 719, 767  
Rouault, A. 599, 836, 847  
Rubin, R. 794, 798

### S

Sage, K. 518  
Sérusier, P. 770  
Seurat, G. 725  
Sisley, A. 786, 792, 820  
Soutine, C. 796

### T

Tchelitchev, P. 517, 519  
Toulouse-Lautrec, H. de  
553, 771  
Twachtman, J. H. 544

### U

Utrillo, M. 547, 594, 759,  
764, 851, 855

### V

Valmier, G. 525  
Valtat, L. 749, 822, 840,  
843, 848  
van Dongen, K. 543  
Villon, J. 746  
Vlaminck, M. de. 740,  
753, 827, 831, 846  
Vuillard, E. 774, 824, 826  
Zadkine, O. 736, 737

## ILLUSTRATIONS

### FRONT COVER

LOT 732  
Pablo Picasso, *Citrons et verre*, 1944. © 2024 Estate of Pablo Picasso / Artists Rights Society (ARS), New York.

### INSIDE COVER

LOT 712  
Francis Picabia, *Le bouquet, Saint-Tropez*, 1909 (detail).

### FRONTISPIECE ONE

LOT 806  
Ernst Ludwig Kirchner, *Aus dem Wald schreitender Akt*, 1913-1920 (detail).

### FRONTISPIECE TWO

LOT 730  
Giorgio Morandi, *Natura morta*, 1949 (detail).  
© 2024 Artists Rights Society (ARS), New York/SIAE, Rome.

### OPPOSITE SALE INFORMATION PAGE

LOT 545  
Marc Chagall, *Les Amoureux sous les palmiers à Antibes*, 1969 (detail). © 2024 Artists Rights Society (ARS), New York / ADAGP, Paris.

### OPPOSITE CONTACT INFORMATION PAGE

LOT 759  
Maurice Utrillo, *Le maquis de Montmartre*, 1935 (detail).  
© 2024 Artists Rights Society (ARS), New York / ADAGP, Paris  
and Association Maurice Utrillo.

### FRONTISPIECE THREE

LOT 533  
Pablo Picasso, *Minotaure Aveugle guidé par Marie-Thérèse au Pigeon dans la Nuit étoilée Etat IV* 1933, from *La Suite Vollard* (detail). © 2024 Estate of Pablo Picasso / Artists Rights Society (ARS), New York.

### FRONTISPIECE FOUR

LOT 564  
Paul Klee, *Stadt der Kirchen*, 1918 (detail).

### WORKS ON PAPER SALE DIVIDER PAGE

LOT 505  
René Magritte, *Sans titre, circa 1965* (detail).  
© 2024 C. Herscovici / Artists Rights Society (ARS), New York.

### DAY SALE DIVIDER PAGE

LOT 786  
Alfred Sisley, *Le village de Champagne au coucher du soleil, avril, circa 1885* (detail).

### OPPOSITE PICASSO CERAMICS SALE INFORMATION PAGE

Pablo Picasso, *Vase aztèque aux quatre visages (A.R. 402)*, 1957.  
© 2024 Estate of Pablo Picasso / Artists Rights Society (ARS),  
New York.

Pablo Picasso, *Hibou (A.R. 224)*, 1953. © 2024  
Estate of Pablo Picasso / Artists Rights Society (ARS), New York.

### ON SALE INFORMATION PAGE

Pablo Picasso, *Gros oiseau corrida (A.R. 191)*, 1953 (detail). © 2024  
Estate of Pablo Picasso / Artists Rights Society (ARS), New York.

### OPPOSITE INDEX PAGE

LOT 512  
Salvador Dalí, *Rhinocéros*, 1959 (detail). © 2024 Salvador Dalí,  
Fundació Gala-Salvador Dalí / Artists Rights Society (ARS),  
New York.

